

# SUZUKI MARIN 2023 TILLBEHÖR, SERVICE & SNABBLISTA

©2023 SUZUKI MOTOR CO., LTD. ALL RIGHTS RESERVED.



**FÖR ÅTERFÖRSÄLJARE**

# INDEX

## OPERATION SYSTEMS (04-53)

- 04 **SYNCR0-EYE**
- 06 **SUZUKI PRECISION CONTROL**
- 16 **MECHANICAL REMOTE CONTROL**
- 30 **KEYLESS START SYSTEM**
- 32 **SUZUKI MULTI-FUNCTION GAUGE (SMG4)**
- 40 **FishHunter™ Drive**
- 42 **SUZUKI MULTI-FUNCTION DISPLAY**
- 44 **SUZUKI DIAGNOSTIC SYSTEM MOBILE PLUS**
- 46 **ANALOGUE INSTRUMENT**
- 48 **STEERING**
- 50 **ELECTRICAL PARTS**
- 52 **FUEL SYSTEM**

## SUZUKI PROPELLERS (54-57)

- 54 **STANDARDPROPELLRAR VID MOTORLEVERANS**
- 54 **WATERGRIP**
- 56 **PROPELLER LINE-UP**

## MAINTAINING YOUR SUZUKI (58-63)

- 58 **CARE & MAINTENANCE ITEM**
- 60 **MAINTENANCE KITS**

## APPLICATION CHART (62-63)

## TILLBEHÖR & INFORMATION (64-65)

## SEVICESHEMA (66-68)

## KONTAKTUPPGIFTER

PARTNER SUPPORT / INNESÄLJ  
Telefon: 08-923420  
Mail: innesaljmotor@kgk.se

SERVICEAVDELNING  
Telefon: 08-923396 / 08-923301  
Mail: marinservice@kgk.se

*Kom ihåg att alltid ha motornummer tillgängligt vid kontakt med KGK Motor AB*

# Integrated Control System



"SYNCRE-EYE" is a comprehensive system Suzuki has developed which "connects" various devices so that they may work together in synchronization. This innovative system will also improve the control technology of the boat by "sensing" various situations surrounding the boat and be compatible with future technologies.





# SUZUKI PRECISION CONTROL

Drive By Wire (Suzuki Precision Control : S.P.C) is a technologically advanced computer-based control system with electronic wiring that eliminates the source of friction and resistance. While you enjoy smooth throttle and shift operation, the system's computer is processing and transmitting commands in real-time to actuators at the engine that deliver precise throttle controls with smoother, decisive shifting.

The Drive-By-Wire system features:

- Control of up to 6 OBM units.
- Automatic Trim available by using SMD or SMG4.

Find out more here:



\*QR code is a registered trademark of DENSO WAVE.

## Remote Control Box

- Integrated SELECT and THROTTLE ONLY switches.
- 1-lever operation for multiple outboards (Dual Top Mount).
- Integrated Emergency Stop Switch (Flush Mount only)



Single Top Mount



Dual Top Mount



Flush Mount

## Switch Panels

- Mounting bolts concealed for a smooth, luxurious finish.
- 1 action start/stop for multi-installation boats.  
(Engines start in order from port to starboard)  
See page 10 for a reference of switch panel selection.



# COMPONENT PARTS

## 1 R/C BOX BINNACLE MOUNT R/C BOX



**67200-98L00-000**  
for Single Engine



**67200-98L10-000**  
for Dual Engine



**67200-98L20-000**  
for Single Engine

## FLUSH MOUNT R/C BOX

## 2 CONTROL PANEL



**37120-98L00-000**  
for Dual Engine



**37120-98L10-000**  
for Triple Engine



**37120-98L20-000**  
for Quadruple Engine  
PORT



**37120-98L30-000**  
for Quadruple Engine,  
Quintuple Engine  
STBD



**37120-98L40-000**  
for Quintuple Engine  
PORT



**37120-98L50-000**  
for Sextuple Engine  
PORT



**37120-98L60-000**  
for Sextuple Engine  
STBD

## 3 BUZZER



**38500-93J90-000**

## 4 BOAT CONTROL MODULE



**36770-98L01-000**

## BCM HOLDER (F) BCM HOLDER (R)



**36775-98L00-000**  
(F)  
**36776-98L00-000**  
(R)

## BCM CUSHION



**33925-98L00-000**

## 5 TERMINAL RESISTOR



**33926-98L00-000**

## 6 BATTERY LEAD WIRE



**36625-98J10-000**  
2.2m / 7.2ft

**36625-98J20-000**  
6.1m / 20ft

## 7 BCM #1 WIRING HARNESS



**36623-98L00-000**  
for Single Engine

**36623-98L30-000**  
for Dual or Triple  
Engine

**36623-98L40-000**  
for  
Quadruple, Quintuple,  
and Sextuple Engine

## 8 HARNESS, EMERGENCY SWITCH EXTENSION



**36627-98L10-000**  
1.5m / 4.9ft

## 9 SIGNAL CONVERTER UNIT



**37140-98L00-000**

## 10 DUAL STATION WIRING HARNESS



**36622-98L00-000**

## 11 BCM #2 WIRING HARNESS



**36624-98L00-000**  
for Single Engine

**36624-98L10-000**  
for Dual or Triple  
Engine

**36624-98L20-000**  
for Quadruple,  
Quintuple, and  
Sextuple engines

## 12 ENGINE WIRING HARNESS



**36621-98L00-000**

## A MAIN SWITCH PANEL (REGULAR KEY)



**37100-98L10-000**  
Vertical type with  
Emergency stop  
switch



**37100-98L20-000**  
Horizontal type with  
Emergency stop  
switch



**37100-98L00-000**  
Ignition only, use with  
emergency switch

# COMPONENT PARTS

## A MAIN SWITCH PANEL (KEYLESS START SYSTEM)



**37290-98L10-000**  
Vertical type with  
Emergency stop  
switch



**37290-98L20-000**  
Horizontal type with  
Emergency stop  
switch



**37290-98L00-000**  
Ignition only, use with  
emergency switch



## B EMERGENCY SWITCH PANEL

**37803-98L00-000**

## C MAIN WIRING HARNESS



**36620-98L00-000**  
6.5m / 21.3ft for  
control system

**36620-98L10-000**  
9.5m / 31.1ft for  
control system

## D MAIN WIRING HARNESS EXTENSION

**36620-98L20-000**  
2.0m / 6.5ft for  
control system

## E TROLL MODE SWITCH PANEL



**37860-98L00-000**

## F R/C BOX HARNESS EXTENSION



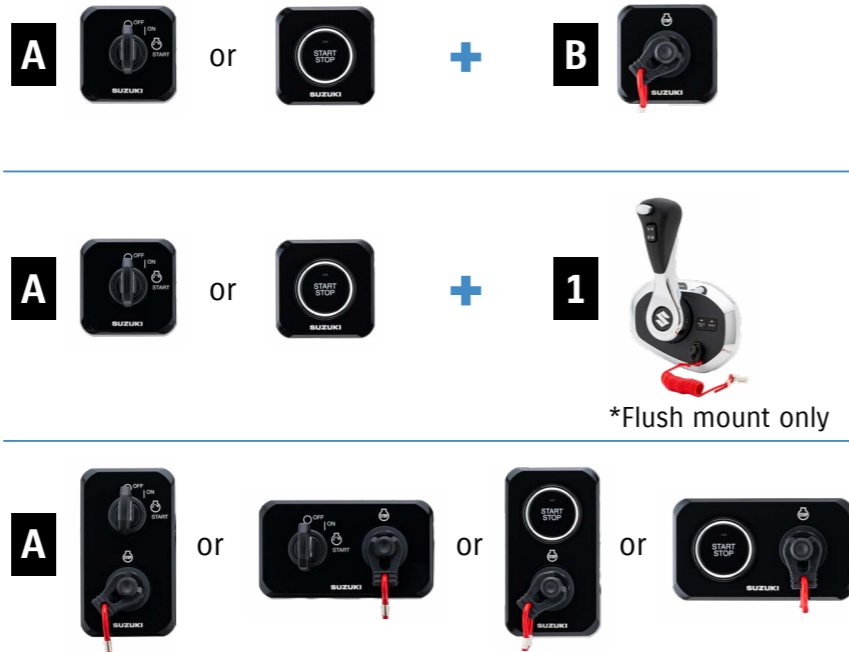
**36627-98L00-000**  
1.0m / 3.2ft

## G HARNESS COMP, CAN EXT



**36627-98L20-000**  
2.0m / 6.5ft for  
triple engine, and  
quadruple engine

### Switch Panel Selection Reference



# EXTRA OPTION

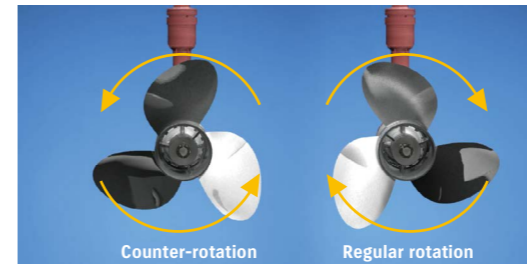
## COUNTER SELECT CONNECTOR



### 36612-98J20-000

Applicable Model DF150AP/175AP/200AP,  
DF250AP/300AP

Converts to counter rotation specification.



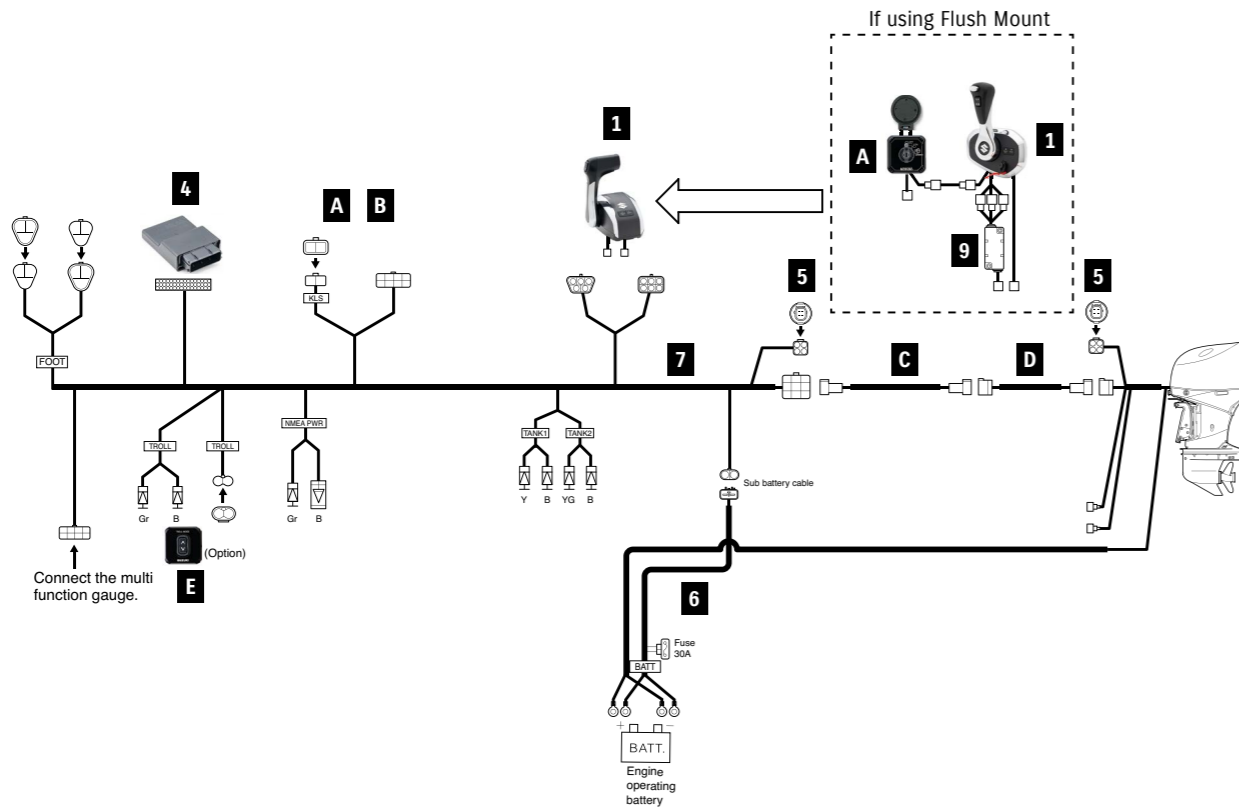
## Suzuki Selective Rotation

In multi-outboard installations on large boats, a counter-rotation outboard is usually paired with a regular rotation model to help keep the boat travelling on an even keel and in a straight line. Suzuki Selective Rotation eliminates the need to purchase a dedicated counter-rotation outboard by using a special switch that turns a regular rotation outboard into a counter-rotation model.



# REMOTE-CONTROL KIT

## SINGLE ENGINE

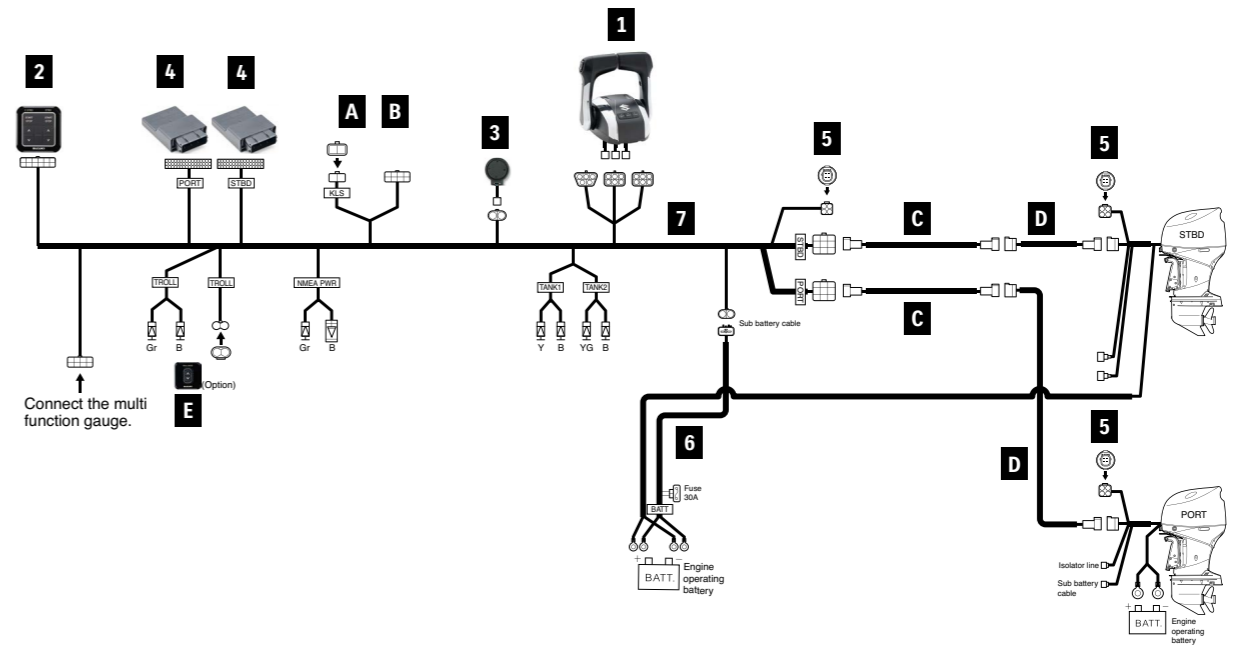


Items A ~ G are not included in the Kits. Please purchase them separately.

ITEM	For SINGLE ENGINE		LENGTH	KIT			
	PART NUMBER	PART NAME		BINNACLE-MOUNT		FLUSH-MOUNT	
				1st STATION KIT 67000-98L01-000	2nd STATION KIT 67000-98LA1-000	1st STATION KIT 67000-98L11-000	2nd STATION KIT 67000-98LB1-000
1	67200-98L00-000	BINNACLE MOUNT R/C BOX	1	1	-	-	
	67200-98L20-000	FLUSH MOUNT R/C BOX	-	-	1	1	
3	38500-93J90-000	WARNING BUZZER	-	1	-	1	
	09407-08401-000	WARNING BUZZER CLAMP	-	1	-	1	
4	36770-98L01-000	BOAT CONTROL MODULE	1	1	1	1	
	36775-98L00-000	BCM HOLDER (F)	1	1	1	1	
	36776-98L00-000	BCM HOLDER (R)	1	1	1	1	
	33925-98L00-000	BCM CUSHION	1	1	1	1	
5	33926-98L00-000	TERMINAL RESISTOR	2	-	2	-	
6	36625-98J10-000	BATTERY-LEAD	1	-	1	-	
7	36623-98L00-000	BCM #1 WIRING HARNESS	1	-	1	-	
8	36627-98L10-000	HARNESS ASSY,EM SWITCH EXT	-	-	1	1	
9	37140-98L00-000	UNIT COMP,SIGNAL CONVERTER	-	-	1	1	
10	36622-98L00-000	DUAL-STATION WIRING HARNESS	-	1	-	1	
11	36624-98L00-000	BCM #2 WIRING HARNESS	-	1	-	1	
-	09403-13402-000	HARNESS CLAMP	10	10	10	10	
A	37100-98L00-000	MAIN SWITCH PANEL	Select type	-	37100-98L00	37290-98L00	
	37100-98L10-000	MAIN SWITCH PANEL VERTICAL			or		
	37100-98L20-000	MAIN SWITCH PANEL HORIZONTAL			37290-98L00		
	37290-98L00-000	MAIN SWITCH PANEL (Keyless)			-		
	37290-98L10-000	MAIN SWITCH PANEL VERTICAL (Keyless)			-		
	37290-98L20-000	MAIN SWITCH PANEL HORIZONTAL (Keyless)	-	-	-	-	
B	37803-98L00-000	EMERGENCY SWITCH PANEL	*1	*1	-	-	
C	36620-98L00-000	MAIN WIRING HARNESS	6.5m/21.3ft 9.5m/31.1ft	1 per station			
	36620-98L10-000						
D	36620-98L20-000	MAIN WIRING HARNESS EXTENSION	2.0m/6.5ft	Select if necessary			
E	37860-98L00-000	TROLL MODE SWITCH PANEL (optional)	-	Optional			
F	36627-98L00-000	HARNESS COMP,R/CON EXT	1.0m/3.2ft	-	1	1	

\*Required when using 37100-98L00 or 37290-98L00 with BINNACLE MOUNT.

## DUAL ENGINE



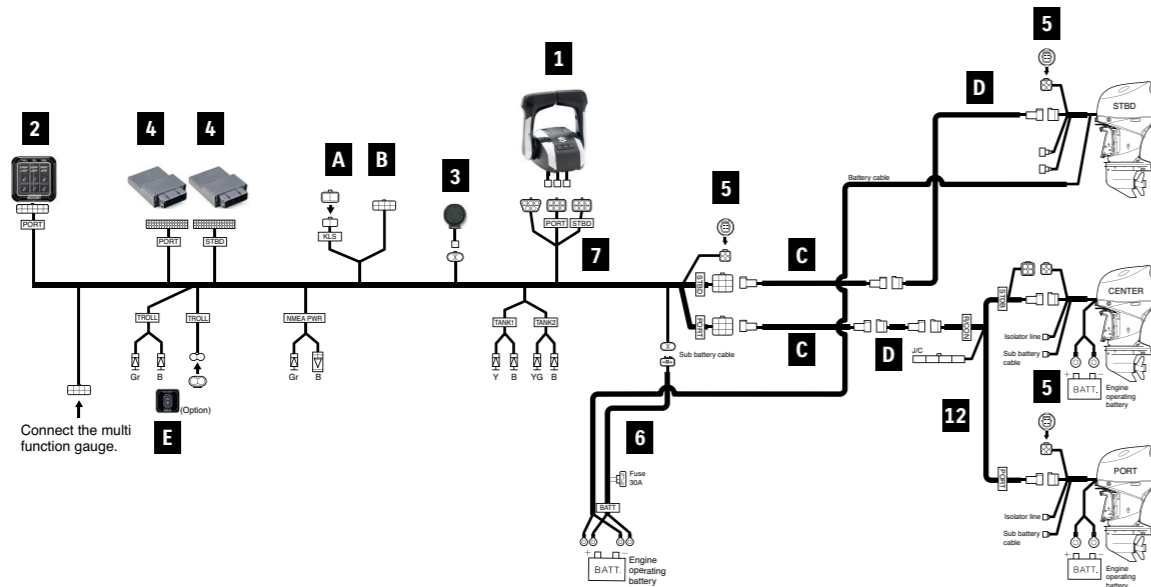
Items A ~ G are not included in the Kits. Please purchase them separately.

ITEM	For DUAL ENGINE		LENGTH	KIT	
	PART NUMBER	PART NAME		1st STATION KIT	2nd STATION KIT
				67000-98L21-000	67000-98LC1-000
1	67200-98L10-000	BINNACLE MOUNT R/C BOX	1	1	
2	37120-98L00-000	CONTROL PANEL	1	1	
	38500-93J90-000	WARNING BUZZER	1	2	
3	09407-08401-000	WARNING BUZZER CLAMP	1	2	
4	36770-98L01-000	BOAT CONTROL MODULE	2	2	
	36775-98L00-000	BCM HOLDER (F)	2	2	
	36776-98L00-000	BCM HOLDER (R)	2	2	
	33925-98L00-000	BCM CUSHION	2	2	
5	33926-98L00-000	TERMINAL RESISTOR	3	-	
6	36625-98J10-000	BATTERY-LEAD	1	-	
7	36623-98L30-000	BCM #1 WIRING HARNESS	1	-	
10	36622-98L00-000	DUAL-STATION WIRING HARNESS	-	1	
11	36624-98L10-000	BCM #2 WIRING HARNESS	-	1	
-	09403-13402-000	HARNESS CLAMP	15	10	
-	36612-98J20-000	CONNECTOR, COUNTER SELECT	1	-	
A	37100-98L00-000	MAIN SWITCH PANEL	Select type	-	
	37100-98L10-000	MAIN SWITCH PANEL VERTICAL			
	37100-98L20-000	MAIN SWITCH PANEL HORIZONTAL			
	37290-98L00-000	MAIN SWITCH PANEL (Keyless)			
	37290-98L10-000	MAIN SWITCH PANEL VERTICAL (Keyless)			
	37290-98L20-000	MAIN SWITCH PANEL HORIZONTAL (Keyless)	-	-	
B	37803-98L00-000	EMERGENCY SWITCH PANEL	*1	*1	
C	36620-98L00-000	MAIN WIRING HARNESS	6.5m/21.3ft 9.5m/31.1ft	2 per station	
	36620-98L10-000				
D	36620-98L20-000	MAIN WIRING HARNESS EXTENSION	2.0m/6.5ft	Select if necessary	
E	37860-98L00-000	TROLL MODE SWITCH PANEL (optional)	-	Optional	
F	36627-98L00-000	HARNESS COMP,R/CON EXT	1.0m/3.2ft	Select if necessary	

\*Required when using 37100-98L00 or 37290-98L00 with BINNACLE MOUNT.

# REMOTE-CONTROL KIT

## TRIPLE ENGINE

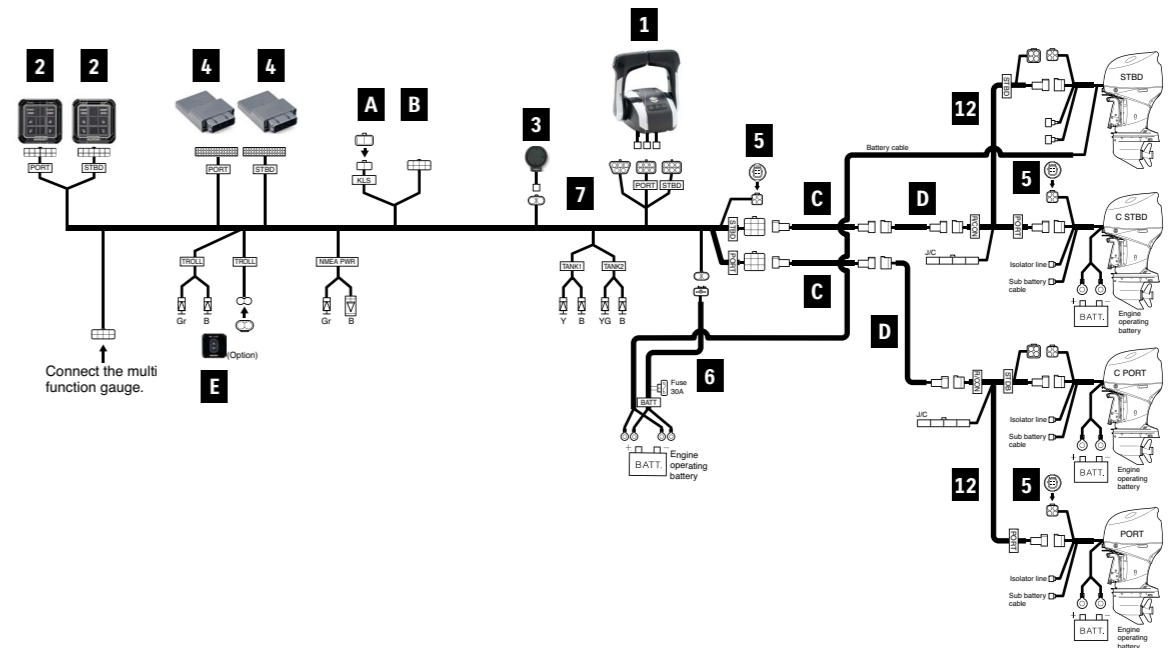


Items A ~ G are not included in the Kits. Please purchase them separately.

For TRIPLE ENGINE				KIT	
PART NUMBER	PART NAME	LENGTH	KIT		
			1st STATION KIT 67000-98L31-000	2nd STATION KIT 67000-98LD1-000	
1	67200-98L10-000	BINNACLE MOUNT R/C BOX	1	1	
2	37120-98L10-000	CONTROL PANEL	1	1	
3	38500-93J90-000	WARNING BUZZER	1	2	
	09407-08401-000	WARNING BUZZER CLAMP	1	2	
4	36770-98L01-000	BOAT CONTROL MODULE	2	2	
	36775-98L00-000	BCM HOLDER (F)	2	2	
	36776-98L00-000	BCM HOLDER (R)	2	2	
	33925-98L00-000	BCM CUSHION	2	2	
5	33926-98L00-000	TERMINAL RESISTOR	3	-	
6	36625-98J10-000	BATTERY-LEAD	1	-	
7	36623-98L30-000	BCM #1 WIRING HARNESS	1	-	
10	36622-98L00-000	DUAL-STATION WIRING HARNESS	-	1	
11	36624-98L10-000	BCM #2 WIRING HARNESS	-	1	
12	36621-98L00-000	ENGINE WIRING HARNESS	1	-	
-	09403-13402-000	HARNESS CLAMP	18	10	
-	36612-98J20-000	CONNECTOR, COUNTER SELECT	1	-	
A	37100-98L00-000	MAIN SWITCH PANEL	Select type	Select type	
	37100-98L10-000	MAIN SWITCH PANEL VERTICAL			
	37100-98L20-000	MAIN SWITCH PANEL HORIZONTAL			
	37290-98L00-000	MAIN SWITCH PANEL (Keyless)			
	37290-98L10-000	MAIN SWITCH PANEL VERTICAL (Keyless)			
	37290-98L20-000	MAIN SWITCH PANEL HORIZONTAL (Keyless)			
B	37803-98L00-000	EMERGENCY SWITCH PANEL	*1	*1	
C	36620-98L00-000	MAIN WIRING HARNESS	6.5m/21.3ft	2 per station	
	36620-98L10-000	MAIN WIRING HARNESS EXTENSION	9.5m/31.1ft		
D	36620-98L20-000	MAIN WIRING HARNESS EXTENSION	2.0m/6.5ft	Select if necessary	
E	37860-98L00-000	TROLL MODE SWITCH PANEL		Optional	
F	36627-98L00-000	HARNESS COMP, R/CON EXT	1.0m/3.2ft	Select if necessary	
G	36627-98L20-000	HARNESS COMP, CAN EXT	2.0m/6.5ft	Select if necessary	

\*Required when using 37100-98L00 or 37290-98L00 with BINNACLE MOUNT.

## QUADRUPLE ENGINE



Items A ~ G are not included in the Kits. Please purchase them separately.

For QUADRUPLE ENGINE				KIT	
PART NUMBER	PART NAME	LENGTH	KIT		
			1st STATION KIT 67000-98L41-000	2nd STATION KIT 67000-98LE1-000	
1	67200-98L10-000	BINNACLE MOUNT R/C BOX	1	1	
2	37120-98L20-000	CONTROL PANEL PORT	1	1	
	37120-98L30-000	CONTROL PANEL STBD	1	1	
3	38500-93J90-000	WARNING BUZZER	1	2	
	09407-08401-000	WARNING BUZZER CLAMP	1	2	
4	36770-98L01-000	BOAT CONTROL MODULE	2	2	
	36775-98L00-000	BCM HOLDER (F)	2	2	
	36776-98L00-000	BCM HOLDER (R)	2	2	
	33925-98L00-000	BCM CUSHION	2	2	
5	33926-98L00-000	TERMINAL RESISTOR	3	-	
6	36625-98J10-000	BATTERY-LEAD	1	-	
7	36623-98L40-000	BCM #1 WIRING HARNESS	1	-	
10	36622-98L00-000	DUAL-STATION WIRING HARNESS	-	1	
11	36624-98L20-000	BCM #2 WIRING HARNESS	-	1	
12	36621-98L00-000	ENGINE WIRING HARNESS	2	-	
-	09403-13402-000	HARNESS CLAMP	20	15	
-	36612-98J20-000	CONNECTOR, COUNTER SELECT	2	-	
A	37100-98L00-000	MAIN SWITCH PANEL	Select type	Select type	
	37100-98L10-000	MAIN SWITCH PANEL VERTICAL			
	37100-98L20-000	MAIN SWITCH PANEL HORIZONTAL			
	37290-98L00-000	MAIN SWITCH PANEL (Keyless)			
	37290-98L10-000	MAIN SWITCH PANEL VERTICAL (Keyless)			
	37290-98L20-000	MAIN SWITCH PANEL HORIZONTAL (Keyless)			
B	37803-98L00-000	EMERGENCY SWITCH PANEL	*1	*1	
C	36620-98L00-000	MAIN WIRING HARNESS	6.5m/21.3ft	2 per station	
	36620-98L10-000	MAIN WIRING HARNESS EXTENSION	9.5m/31.1ft		
D	36620-98L20-000	MAIN WIRING HARNESS EXTENSION	2.0m/6.5ft	Select if necessary	
E	37860-98L00-000	TROLL MODE SWITCH PANEL		Optional	
F	36627-98L00-000	HARNESS COMP,R/CON EXT	1.0m/3.2ft	Select if necessary	
G	36627-98L20-000	HARNESS COMP,CAN EXT	2.0m/6.5ft	Select if necessary	

\*Required when using 37100-98L00 or 37290-98L00 with BINNACLE MOUNT.



# MECHANICAL REMOTE CONTROL



For mechanical control models from year 2023, we introduce a new Main Wiring Harness. This new harness will enable CAN connection, which allows mechanical models to use functions that were previously exclusive to SPC models.  
By using with the SMG4, it will also enable the Automatic trim and use of the new Keyless Start System\*.

## Functions available using the CAN Harness

	DF40A-60A	DF70A-100B	DF100C-140B	DF150A-200A	DF200-250
CAN Connection	✓	✓	✓	✓	X
Automatic Trim	X	X	✓	✓	X
New Keyless Start System	X	✓	✓	✓	X

\*If using the new Keyless Start System, please ensure to use the new switch panels.  
The Keyless Start System is only available in limited regions. If you are not sure about your market, please check with your country coordinator.

## REMOTE-CONTROL

OPERATION SYSTEMS

	Reference
MAIN WIRING HARNESS (CAN Connection)	36620-93JA0/B0/C0 <b>NEW</b>
REMOTE CONTROL BOX	67200-88L01 67200-88L11 67200-93J34 67200-93J70 
MAIN SWITCH PANEL (Regular Key)	37100-98L** 
MAIN SWITCH PANEL (Keyless)	37290-98L** 
GAUGE	SMG4 (page 32)  or Analogue Gauge (page 46)

# COMPONENT OF MECHANICAL REMOTE CONTROL

## 1 R/C BOX BINNACLE MOUNT R/C BOX



**67200-88L01-000**  
for Single Engine  
Applicable Model DF8A-250

## BINNACLE MOUNT R/C BOX DUAL



**67200-88L11-000**  
for Dual Engine  
Applicable Model DF70A-250

## FLUSH MOUNT R/C BOX



**67200-93J34-000**  
for Single Engine  
Applicable Model DF8A-250

## SIDE MOUNT REMOTE CONTROL BOX



**67200-91J32-000**  
for Single Engine. Without IGN SW  
Applicable Model DF4A-6A

**67200-94J40-000**  
for Single Engine. With warning  
buzzer without PTT switch  
Applicable Model DF8A-30A

**67200-93J70-000**  
for Single Engine. With PTT switch  
Applicable Model DF9.9B-250

## 2 MAIN SWITCH PANEL (REGULAR KEY)



**37100-98L10-000**  
Vertical type With  
Emergency stop switch  
Applicable Model DF9.9B-250



**37100-98L20-000**  
Horizontal type With  
Emergency stop switch  
Applicable Model DF9.9B-250

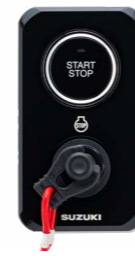


**37100-98L30-000**  
Dual Ignition With  
Emergency stop switch  
Applicable Model DF9.9B-250



**37100-98L00-000**  
Ignition switch only  
Applicable Model DF9.9B-250

## 2 MAIN SWITCH PANEL (KEYLESS START SYSTEM with CAN Connection)



**37290-98L10-000**  
Vertical type with  
Emergency stop  
switch



**37290-98L20-000**  
Horizontal type with  
Emergency stop  
switch



**37290-98L00-000**  
Ignition switch only



**37803-98L00-000**

## 4 MAIN WIRING HARNESS (CAN Connection)

**NEW**



**36620-93JA0-000**  
6.5m/21.3ft for Control system  
Applicable Model DF40A-200A

**36620-93JB0-000**  
5.0m/16.4ft for Control system  
Applicable Model DF40A-200A

**36620-93JC0-000**  
8.0m/26.2ft for Control system  
Applicable Model DF40A-200A

## MAIN WIRING HARNESS EXTENSION



**36620-93JD0-000**  
Extension, 2.0m/6.5ft  
Applicable Model DF40A-200A

**36620-93JE0-000**  
Extension, 3.0m/9.8ft  
Applicable Model DF40A-200A

## 4 MAIN WIRING HARNESS (Non-CAN Connection)



**36620-93J70-000**  
6.5m/21.3ft for Control system  
Applicable Model 40A-250

**36620-93J80-000**  
5.0m/16.4ft for Control system  
Applicable Model DF40A-250

**36620-93J90-000**  
8.0m/26.2ft for Control system  
Applicable Model DF40A-250

**36620-89L10-000**  
6.5m/21.3ft for Control system  
Applicable Model DF9.9B/15A/  
20A

**36620-94L20-000**  
6.5m/21.3ft for Control system  
Applicable Model DF25A/30A

**36620-93J12-000**  
2.0m/6.5ft for Control system  
Applicable Model DF9.9B-250

**36620-93J42-000**  
3.0m/9.8ft for Control system  
Applicable Model DF9.9B-250

**5** REMOTE-CONTROL CABLE (ORT THROTTLE AND SHIFT CABLES)



**67320-93J00-000**  
2.44 m / 8.0 ft  
Applicable Model DF4A-250

**67320-93J10-000**  
3.05 m / 10.0 ft  
Applicable Model DF4A-250

**67320-93J20-000**  
3.66 m / 12.0 ft  
Applicable Model DF4A-250

**67320-93J30-000**  
4.27 m / 14.0 ft  
Applicable Model DF4A-250

**67320-93J40-000**  
4.88 m / 16.0 ft  
Applicable Model DF4A-250

**67320-93J50-000**  
5.49 m / 18.0 ft  
Applicable Model DF4A-250

**67320-93J60-000**  
6.10 m / 20.0 ft  
Applicable Model DF4A-250

**67320-93J70-000**  
6.71 m / 22.0 ft  
Applicable Model DF4A-250

**67320-93J80-000**  
7.32 m / 24.0 ft  
Applicable Model DF4A-250

**6** PTT SWITCH PANEL



**37805-88L00-000**  
Applicable Model DF40A-250

**7** KEYLESS CONTROL UNIT



**37171-98L01-000**  
443MHz for CAN connection

**37171-98L10-000**  
315MHz for CAN connection

**8** HARNESS ASSY, KEYLESS CONTROL



**36623-98LA0-000**  
for CAN connection

**9** BUZZER ASSY



**38500-93J90-000**

**10** RELAY ASSY, KLS



**38860-96L01-000**

**11** KEY FOB



**37172-96L03-000**  
433MHz

**37172-96L11-000**  
315MHz

**12** HARNESS ASSY, KLS DUAL ENGINE

No photo available

**36621-98L30-000**

**13** WIRE COMP, CAN

No photo available

**36661-96L40-000**

SPACER KIT



**67500-88L00-000**  
for Single Binnacle-mount type  
Applicable Model DF8A-250

**67500-88L10-000**  
for Dual Binnacle-mount type  
Applicable Model DF70A-250

REMOTE CONTROL ATTACHMENT KIT

Converts ME model to REMOTE-CONTROL model.



**67101-97L00-000**  
Applicable Model DF4A-6A

**67130-89L22-000**  
Applicable Model DF9.9B/15A/20A

**67130-94L30-000**  
Applicable Model DF25A/30A  
(Year 2023~)

**67130-94L20-000**  
Applicable Model DF25ATH/30ATH  
(Year 2023~)

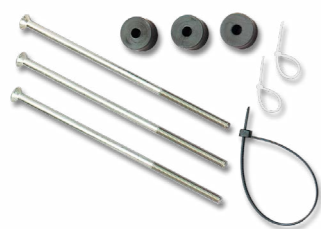
**67130-99J02-000**  
Requires CLAMP BRACKET SET  
(41100-99JL0-YAY)  
Applicable Model DF8A/9.9A

CLAMP BRACKET SET

No photo available

**41100-99JL0-YAY**  
Required to install  
67130-99J02  
Applicable Model DF8A/9.9A

TWIN REMOTE-CONTROL ATTACHMENT KIT



**67140-95601-000**  
Applicable Model DF9.9B-30A/  
100C-250

BATTERY LEAD



**36625-93J10-000**  
6.7 m / 21.9ft  
Applicable Model DF100C-200A/  
200-250

**36625-93J01-000**  
3.9 m / 12.7ft  
Applicable Model DF100C-200A/  
200-250

KEYLESS PARTS HOLDER



**37173-96L10-000**

HOLDER



**32980-38F00-000**

CUSHION



**32851-93J00-000**



## EXTRA OPTIONS

### RIGGING TUBE



**990C0-20010-000**  
Applicable Model DF70A-350A  
\*Connect to the hose adapter  
equipped on the engine

### TROLL MODE SWITCH PANEL



**37860-98L00-000**  
Applicable Model DF40A-200A/  
150AP-300AP/  
300B/325A/350A  
Activates SUZUKI Troll Mode  
System and controls RPM  
from idling engine speed up to  
1200rpm at every 50rpm.

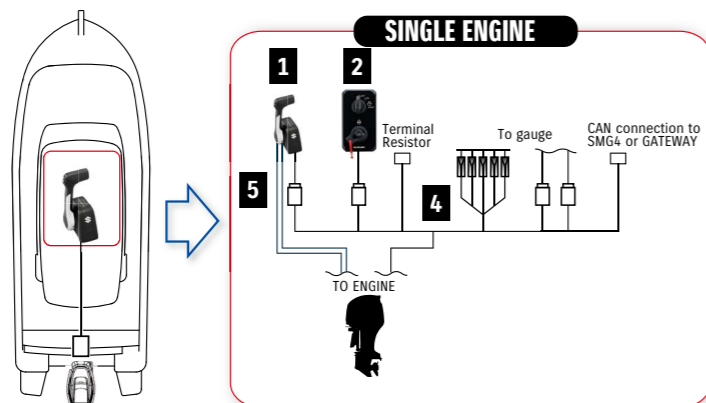
## SUZUKI TROLL MODE SYSTEM

**Troll Mode Switch:**  
An option for Remote Control models from DF40A and over, this system allows the user to adjust engine speed in 50rpm increments, giving highly precise control at low revs. With its own tachometer and control switch, it works alongside our multi-function gauges and analogue gauges.

(Tiller Handle Models from DF40A and over have Suzuki Troll Mode System as standard equipment)

\*Not Applicable for DF250/225/200, DF250W, DF150W, DF90AWQH

## SINGLE ENGINE with CAN Connection



For SINGLE ENGINE (SINGLE STATION, REGULAR KEY)				Required Quantity		
	PART NUMBER	PART NAME	LENGTH	TOP-MOUNT	FLUSH-MOUNT	SIDE-MOUNT
1	67200-88L01-000	BINNACLE MOUNT R/C BOX		1	-	-
	67200-93J34-000	FLUSH MOUNT R/C BOX		-	1	-
	67200-93J70-000	SIDE MOUNT R/C BOX		-	-	1
2	37100-98L10-000	PANEL ASSY, MAIN SWITCH VERTICAL		1	1	-
	37100-98L20-000	PANEL ASSY, MAIN SWITCH HORIZONTAL				
	37100-98L00-000	MAIN SWITCH PANEL				
3	37803-98L00-000	EMERGENCY SWITCH PANEL		*1	*1	-
4	36620-93JA0-000	MAIN WIRING HARNESS	6.5m / 21.3ft	1	1	1
	36620-93JB0-000	MAIN WIRING HARNESS	5.0m / 16.4ft			
	36620-93JC0-000	MAIN WIRING HARNESS	8.0m / 26.2ft			
	36620-93JD0-000	WIRE ASSY, REMOTE CONTROL EXT	2.0m / 6.5ft			
	36620-93JE0-000	WIRE ASSY, REMOTE CONTROL EXT	3.0m / 9.8ft			
5	67320-93J00-000	R/C CABLE	2.4m / 8.0ft	Optional	Optional	Optional
	67320-93J10-000		3.0m / 9.8ft			
	67320-93J20-000		3.6m / 12.0ft			
	67320-93J30-000		4.2m / 14.0ft			
	67320-93J40-000		4.8m / 16.0ft			
	67320-93J50-000		5.4m / 18.0ft			
	67320-93J60-000		6.1m / 20.0ft			
	67320-93J70-000		6.7m / 22.0ft			
67320-93J80-000	7.3m / 24.0ft					
				Select two		

\*Only if using 37100-98L00-000

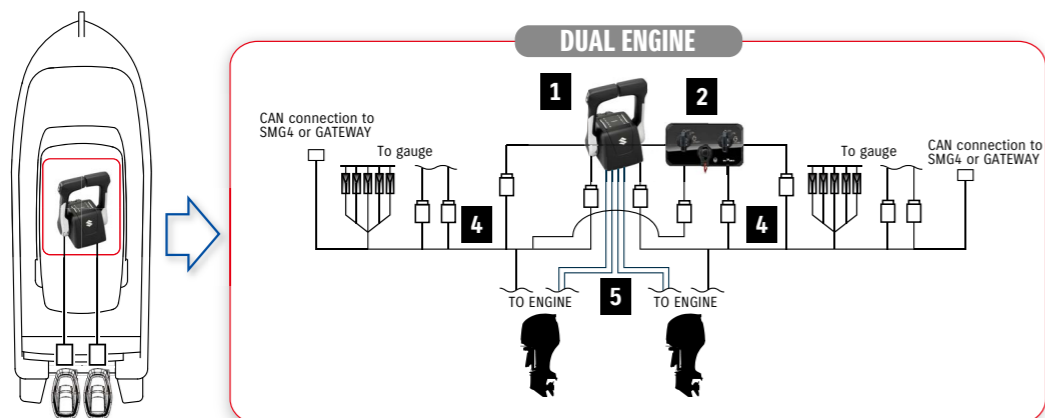
## For KEYLESS START SYSTEM

For SINGLE ENGINE (SINGLE STATION with KEYLESS SYSTEM)				Required Quantity	
	PART NUMBER	PART NAME	LENGTH	TOP-MOUNT	FLUSH-MOUNT
1	67200-88L01-000	BINNACLE MOUNT R/C BOX		1	-
	67200-93J34-000	FLUSH MOUNT R/C BOX		-	1
2	37290-98L10-000	PANEL ASSY, MAIN SWITCH VERTICAL		1	
	37290-98L20-000	PANEL ASSY, MAIN SWITCH HORIZONTAL			
	37290-98L00-000	MAIN SWITCH PANEL			
3	37803-98L00-000	EMERGENCY SWITCH PANEL		*1	
4	36620-93JA0-000	MAIN WIRING HARNESS	6.5m / 21.3ft	1	
	36620-93JB0-000	MAIN WIRING HARNESS	5.0m / 16.4ft		
	36620-93JC0-000	MAIN WIRING HARNESS	8.0m / 26.2ft		
	36620-93JD0-000	WIRE ASSY, REMOTE CONTROL EXT	2.0m / 6.5ft		
	36620-93JE0-000	WIRE ASSY, REMOTE CONTROL EXT	3.0m / 9.8ft		
5	67320-93J00-000	R/C CABLE	2.4m / 8.0ft	Optional	
	67320-93J10-000		3.0m / 9.8ft		
	67320-93J20-000		3.6m / 12.0ft		
	67320-93J30-000		4.2m / 14.0ft		
	67320-93J40-000		4.8m / 16.0ft		
	67320-93J50-000		5.4m / 18.0ft		
	67320-93J60-000		6.1m / 20.0ft		
	67320-93J70-000		6.7m / 22.0ft		
67320-93J80-000	7.3m / 24.0ft				
				Select two	
7	37171-98L01-000	CONTROLLER ASSY, KLS 433		1	
	37171-98L10-000	CONTROLLER ASSY, KLS 315			
8	36623-98LA0-000	HARNESS ASSY, KLS CONT		1	
9	38500-93J90-000	BUZZER ASSY		1	
10	38860-96L01-000	RELAY ASSY, KLS		1	
11	37172-96L03-000	KEY FOB 433 MHZ		2	
	37172-96L11-000	KEY FOB 315 MHZ			

\*Only if using 37100-98L00-000



## DUAL ENGINE with CAN Connection



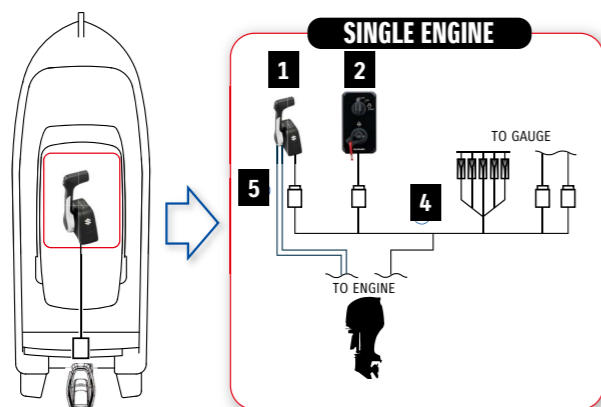
For DUAL ENGINE (SINGLE STATION, REGULAR KEY)		Required Quantity		
PART NUMBER	PART NAME	LENGTH	TOP MOUNT	SIDE MOUNT
1	67200-88L11-000 BINNACLE MOUNT R/C BOX DUAL REMOTE CONTROL ASSY		1 -	- 2
2	37100-98L30-000 PANEL ASSY, MAIN SWITCH MULTI		1	-
4	36620-93JA0-000 MAIN WIRING HARNESS	6.5m / 21.3ft	2	2
	36620-93JB0-000 MAIN WIRING HARNESS	5.0m / 16.4ft		
	36620-93JC0-000 MAIN WIRING HARNESS	8.0m / 26.2ft		
	36620-93JD0-000 WIRE ASSY, REMOTE CONTROL EXT	2.0m / 6.5ft		
	36620-93JE0-000 WIRE ASSY, REMOTE CONTROL EXT	3.0m / 9.8ft	Optional	Optional
5	67320-93J00-000	2.4m / 8.0ft	Select four	
	67320-93J10-000	3.0m / 9.8ft		
	67320-93J20-000	3.6m / 12.0ft		
	67320-93J30-000	4.2m / 14.0ft		
	67320-93J40-000	4.8m / 16.0ft		
	67320-93J50-000	5.4m / 18.0ft		
	67320-93J60-000	6.1m / 20.0ft		
67320-93J70-000	6.7m / 22.0ft			
67320-93J80-000	7.3m / 24.0ft			
13	36661-96L40-000 WIRE COMP, CAN		1	1

## For KEYLESS START SYSTEM

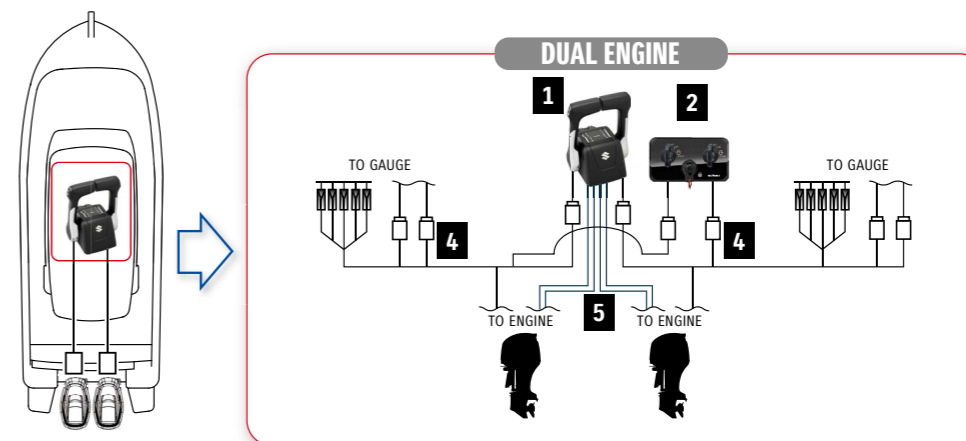
For DUAL ENGINE (SINGLE STATION with KEYLESS SYSTEM)				Required Quantity
PART NUMBER	PART NAME	LENGTH		
1	67200-88L11-000 BINNACLE MOUNT R/C BOX DUAL			1
2	37290-98L00-000 PANEL ASSY, ENG START SW			2
	37803-98L00-000 PANEL ASSY, EMERGENCY SW			1
4	36620-93JA0-000 MAIN WIRING HARNESS	6.5m / 21.3ft		Optional
	36620-93JB0-000 MAIN WIRING HARNESS	5.0m / 16.4ft		
	36620-93JC0-000 MAIN WIRING HARNESS	8.0m / 26.2ft		
	36620-93JD0-000 WIRE ASSY, REMOTE CONTROL EXT	2.0m / 6.5ft		
	36620-93JE0-000 WIRE ASSY, REMOTE CONTROL EXT	3.0m / 9.8ft		
5	67320-93J00-000	2.4m / 8.0ft	R/C CABLE	Select four
	67320-93J10-000	3.0m / 9.8ft		
	67320-93J20-000	3.6m / 12.0ft		
	67320-93J30-000	4.2m / 14.0ft		
	67320-93J40-000	4.8m / 16.0ft		
	67320-93J50-000	5.4m / 18.0ft		
	67320-93J60-000	6.1m / 20.0ft		
67320-93J70-000	6.7m / 22.0ft			
67320-93J80-000	7.3m / 24.0ft			
7	37171-98L01-000 CONTROLLER ASSY, KLS 433			1
	37171-98L10-000 CONTROLLER ASSY, KLS 315			
8	36623-98LA0-000 HARNESS ASSY, KLS CONT			1
9	38500-93J90-000 BUZZER ASSY			2
10	38860-96L01-000 RELAY ASSY, KLS			1
11	37172-96L03-000 KEY FOB 433 MHz			2
	37172-96L11-000 KEY FOB 315 MHz			
12	36621-98L30-000 HARNESS ASSY, KLS DUAL ENG			1



## SINGLE ENGINE with Non-CAN Connection



## DUAL ENGINE with NON-CAN Connection



For SINGLE ENGINE (Single Station)				Required Quantity		
PART NUMBER	PART NAME	LENGTH		BINNACLE-MOUNT	FLUSH-MOUNT	SIDE-MOUNT
1	67200-88L01-000 BINNACLE MOUNT R/C BOX			1	-	-
	67200-93J34-000 FLUSH MOUNT R/C BOX			-	1	-
	67200-93J70-000 SIDE MOUNT R/C BOX			-	-	1
2	37100-98L00-000 MAIN SWITCH PANEL IG SWITCH ONLY			1 (Select type)		
	37100-98L10-000 MAIN SWITCH PANEL VERTICAL					
	37100-98L20-000 MAIN SWITCH PANEL HORIZONTAL					
3	37803-98L00-000 PANEL ASSY, EMERGENCY SWITCH			*1		
4	36620-93J70-000 MAIN WIRING HARNESS	6.5m / 21.3ft		Select one		
	36620-93J80-000 MAIN WIRING HARNESS	5.0m / 16.4ft				
	36620-93J90-000 MAIN WIRING HARNESS	8.0m / 26.2ft				
	36620-93J12-000 MAIN WIRING HARNESS EXTENSION	2.0m / 6.5ft				
	36620-93J41-000 MAIN WIRING HARNESS EXTENSION	3.0m / 9.8ft		Optional. Select if necessary.		
5	67320-93J00-000 R/C CABLE	2.4m / 8.0ft		Select two		
	67320-93J10-000 R/C CABLE	3.0m / 9.8ft				
	67320-93J20-000 R/C CABLE	3.6m / 12.0ft				
	67320-93J30-000 R/C CABLE	4.2m / 14.0ft				
	67320-93J40-000 R/C CABLE	4.8m / 16.0ft				
	67320-93J50-000 R/C CABLE	5.4m / 18.0ft				
	67320-93J60-000 R/C CABLE	6.1m / 20.0ft				
	67320-93J70-000 R/C CABLE	6.7m / 22.0ft				
	67320-93J80-000 R/C CABLE	7.3m / 24.0ft				

\*Only needed if using 37100-98L00

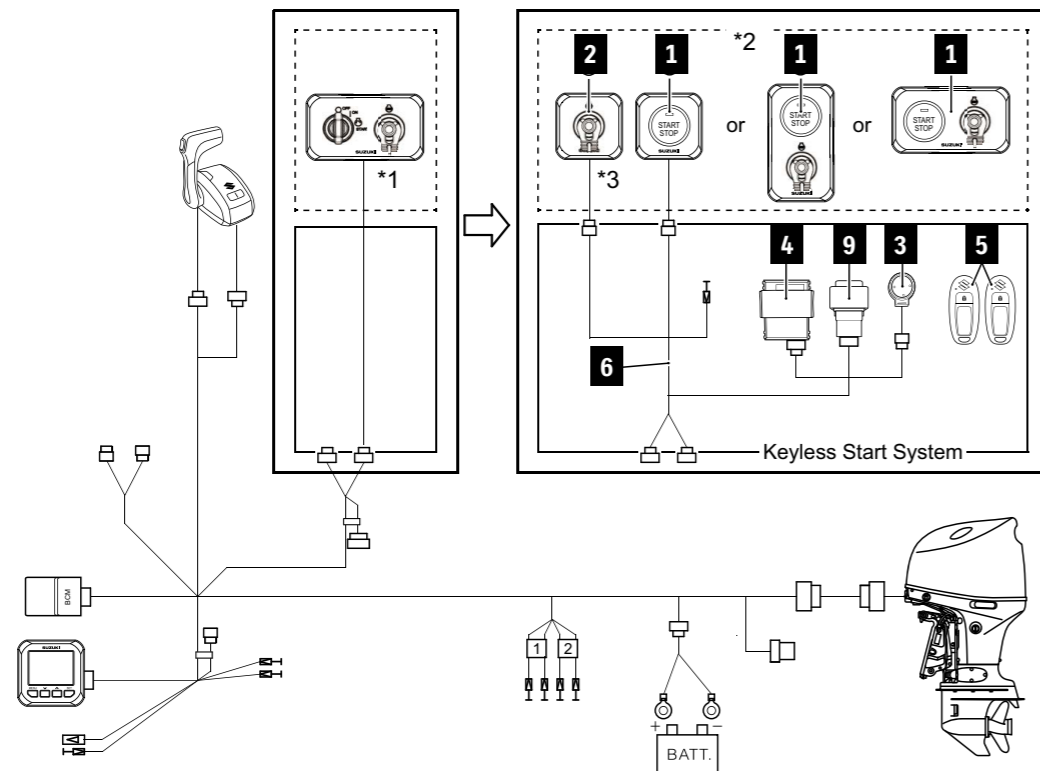
For DUAL ENGINE (Single station)					Required Qty	
PART NUMBER	PART NAME	LENGTH	Qty		Single Station	
1	67200-88L11-000 BINNACLE MOUNT R/C BOX		1		1	
2	37100-98L00-000 MAIN SWITCH PANEL IG SWITCH ONLY		2		Select -98L00 OR -98L30	
	37100-98L30-000 DUAL IGNITION WITH E/S SWITCH		1			
3	37803-98L00-000 PANEL ASSY, EMERGENCY SWITCH		*1		*1	
4	36620-93J70-000 MAIN WIRING HARNESS	6.5m / 21.3ft	Select two		2	
	36620-93J80-000 MAIN WIRING HARNESS	5.0m / 16.4ft				
	36620-93J90-000 MAIN WIRING HARNESS	8.0m / 26.2ft				
	36620-93J12-000 MAIN WIRING HARNESS EXTENSION	2.0m / 6.5ft				
	36620-93J42-000 MAIN WIRING HARNESS EXTENSION	3.0m / 9.8ft	Optional		-	
5	67320-93J00-000 R/C CABLE	2.4m / 8.0ft	Select four		4	
	67320-93J10-000 R/C CABLE	3.0m / 9.8ft				
	67320-93J20-000 R/C CABLE	3.6m / 12.0ft				
	67320-93J30-000 R/C CABLE	4.2m / 14.0ft				
	67320-93J40-000 R/C CABLE	4.8m / 16.0ft				
	67320-93J50-000 R/C CABLE	5.4m / 18.0ft				
	67320-93J60-000 R/C CABLE	6.1m / 20.0ft				
	67320-93J70-000 R/C CABLE	6.7m / 22.0ft				
	67320-93J80-000 R/C CABLE	7.3m / 24.0ft				

\*Only needed if using 37100-98L00

# INSTALLATION DIAGRAM

## KEYLESS START SYSTEM for Suzuki Precision Control or Mechanical Remote Control with CAN Connection

\*SMG4 or SMD is required to use



PART NUMBER	PART NAME	LENGTH	KIT		Total Required Quantity			
			37105-98L04 (433 MHz)	37105-98L14 (315 MHz)	SINGLE	DUAL	TRIPLE	QUAD
1	37290-98L00-000 MAIN SWITCH PANEL 37290-98L10-000 MAIN SWITCH PANEL VERTICAL 37290-98L20-000 MAIN SWITCH PANEL HORIZONTAL	-	-	-	1	1	1	1
2	37803-98L00-000 EMERGENCY SWITCH PANEL	-	-	-	*1	*1	*1	*1
3	38500-93J90-000 BUZZER	-	1	1	1	1	1	
4	37171-98L01-000 KEYLESS CONTROL UNIT 37171-98L10-000	-	1	1	1	1	1	
5	37172-96L03-000 KEY FOB 37172-96L11-000	-	2	2	2	2	2	
6	36623-98LA0-000 KEYLESS CONTROL HARNESS	-	1	1	1	1	1	
9	38860-96L01-000 RELAY ASSY, KLS	-	1	1	1	1	1	
10	37173-96L10-000 HOLDER, KLS PARTS	-	1	1	1	1	1	
11	32980-38F00-000 HOLDER	-	1	1	1	1	1	
12	32851-93J00-000 CUSHION	-	1	1	1	1	1	
-	09407-14407-000 CLAMP, KLS HARNESS	-	1	1	1	1	1	
-	37117-96L00-000 DECAL, KLS	-	2	-	-	-	-	

■ \*Used when using 37290-98L00-000.

# COMPONENT PARTS



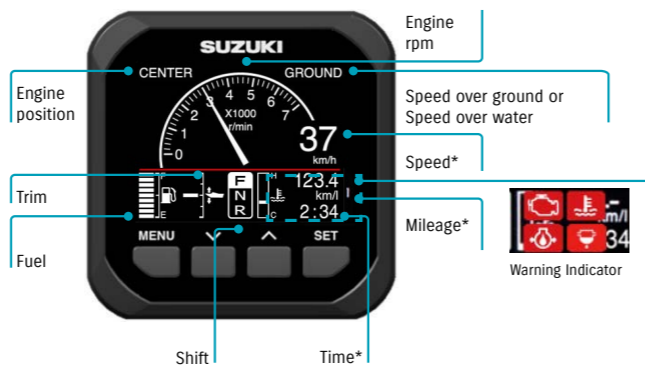
PART NUMBER	PART NAME	NOTE
1	37290-98L00-000 MAIN SWITCH PANEL 37290-98L10-000 MAIN SWITCH PANEL VERTICAL 37290-98L20-000 MAIN SWITCH PANEL HORIZONTAL	
2	37803-98L00-000 EMERGENCY SWITCH PANEL	Used when using 37290-98L00-000
3	38500-93J90-000 BUZZER	
4	37171-98L01-000 KEYLESS CONTROL UNIT 37171-98L10-000	433MHz 315MHz
5	37172-96L03-000 KEY FOB 37172-96L11-000	433MHz 315MHz
6	36623-98LA0-000 KEYLESS CONTROL HARNESS	
9	38860-96L01-000 RELAY ASSY, KLS	
10	37173-96L10-000 HOLDER, KLS PARTS	
11	32980-38F00-000 HOLDER	
12	32851-93J00-000 CUSHION	



# SUZUKI MULTI-FUNCTION GAUGE

The Suzuki Multi-function Gauge (SMG4) shows all the necessary information on one, user-friendly screen. Users can view a wide range of important information, including engine rpm, speed and trim angle, engine temp and fuel economy in and total fuel flow for multiple engine installations. The SMG4 also shows alerts from the engine's sensors and warning systems.

## ANALOGUE TACHO & SPEED MODE



\* Speed sensor or GPS module required.

## TACHO MODE



- Fuel flow (instantaneous)
- Mileage\* (instantaneous and average)
- Trip time, Trip distance\*
- Engine hour, Voltage, Water temp and more...

	GPS Module	Speed sensor
Speed	✓	✓
Mileage	✓	✓
Trip distance	✓	✓
Time	✓	N/A

## TROLL MODE FUNCTION



- Allows you to control your troll mode from the Multi-Function Gauge

This function is available from year 2019 models. Can only be used by models which are adapted to troll mode.

## DISPLAY MODES

### DIGITAL TACHO & SPEED MODE



### ANALOGUE SPEED MODE



\*Night mode screen

### FUEL MODE



## FEATURES

### Multilingual menu

SMG4 is available in 13 languages: English, French, Italian, German, Spanish, Swedish, Norwegian, Finnish, Dutch, Portuguese, Danish, Russian, Japanese.



### Automatic Trim

Automatically adjusts trim angle with OBM RPM



### Demo mode

Shows preinstalled data to demonstrate function of selected screen. (Ideal for boat shows and exhibitions)



**1** GAUGE ASSY, MULTI



34011-96L42-000

**2** WIRE COMP, EXTENSION



**2-1** 990C0-88104-000  
0.6m / 1.9ft

**2-2** 990C0-88105-000  
1.8m / 5.9ft

**3** HARNESS ASSY, NETWORK POWER



990C0-88112-000

**4** CONNECTOR COMP, BRANCH



990C0-88110-000

**5** UNIT COMP, RESISTOR FEMALE



990C0-88113-000

**6** UNIT COMP, RESISTOR MALE



990C0-88114-000

**7** WIRE COMP, GAUGE ADAPTER



**7-1** 36667-96L40-000

**7-2** 36667-96L50-000  
for Tank 3-4

**7-3** 36667-96L11-000  
for Mechanical Control

**8** SENSOR ASSY, PADDLE WHEEL



990C0-88317-000

GPS RECEIVER MODULE



990C0-88122-000

**9** WIRE COMP, GAUGE EXT (0.6m)

**36667-96L60-000**  
0.6m / 1.9ft

**10** ADAPTER COMP, GAUGE

**36661-96L30-000**  
for Dual Engine

**11** ADAPTER, GAUGE FOR MULTI



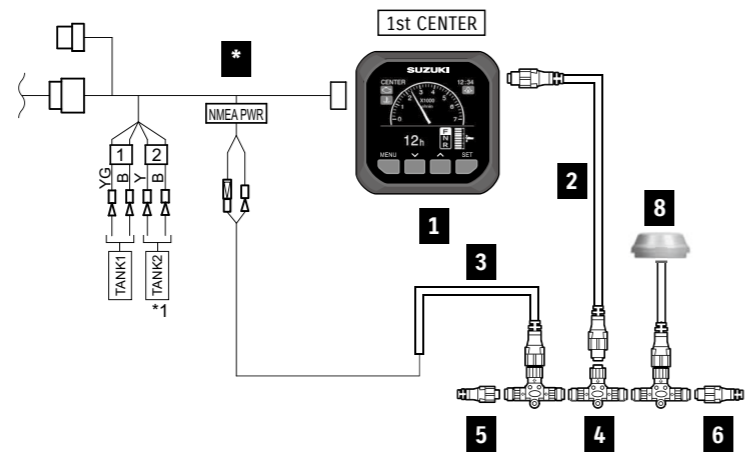
**36665-87L10-000**  
In addition to component of [MECHANICAL SINGLE]



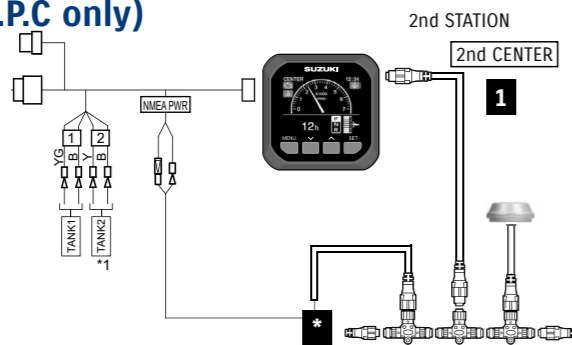
# INSTALLATION DIAGRAM

## SINGLE ENGINE with S.P.C or MECHANICAL CONTROL (CAN Connection)

### SINGLE STATION



### DUAL STATION (S.P.C only)



## TOTAL REQUIREMENT LIST

	For SINGLE ENGINE			Total Required Quantity					
	PART NUMBER	PART NAME	LENGTH	SINGLE STATION	SINGLE STATION (USpeed over water)	SINGLE STATION (Speed over ground)	DUAL STATION	DUAL STATION (USpeed over water)	DUAL STATION (Speed over ground)
1	34011-96L42-000	GAUGE ASSY, MULTI	-	1	1	1	2	2	2
-	36001-88L00-000	CABLE KIT	-	-	1	1	-	1	1
8	990C0-88317-000	SENSOR ASSY, PADDLE WHEEL	-	-	1	-	-	1	-
	990C0-88122-000	GPS RECEIVER MODULE	-	-	-	1	-	-	1
-	33926-98L00-000	TERMINAL RESISTOR	-	1	1	1	-	-	-
*S.P.C	36623-98L00-000	BCM HARNESS No.1	-	1	1	1	1	1	1
	36624-98L00-000	BCM HARNESS No.2	-	-	-	-	1	1	1
*Mechanical	36620-93JA0-000	MAIN WIRING HARNESS	6.5m/21.3ft	1	1	1	Dual station is not applicable for Mechanical Control.		
	5.0m/16.4ft								
	8.0m/26.2ft								

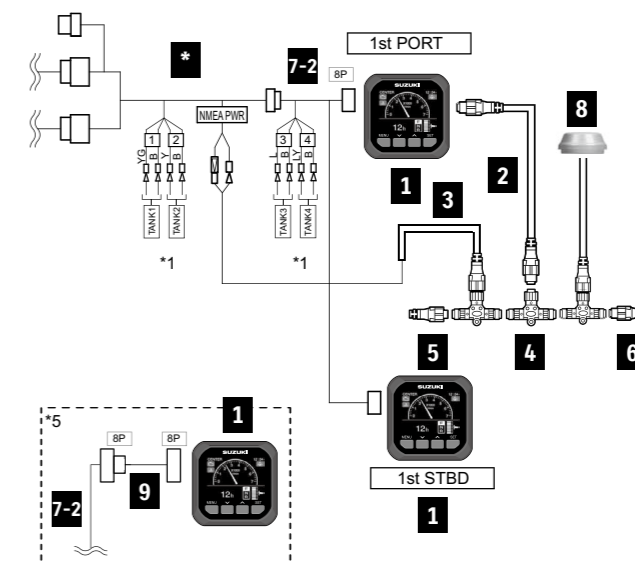
\* BCM Harness No.1 & 2 ⇒ S.P.C. See page 7.  
Main Wiring Harness ⇒ Mechanical Control (CAN Connection). See page 19.

## CABLE KIT COMPONENT

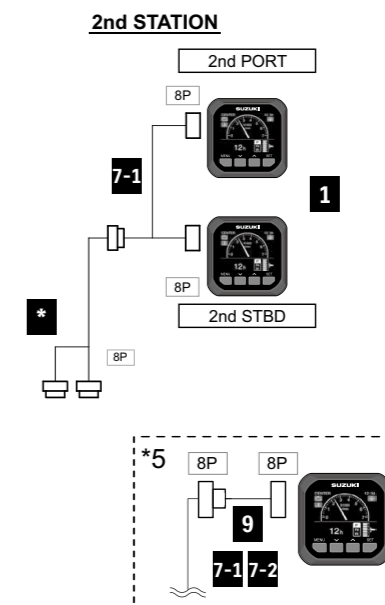
PART NUMBER	PART NAME	LENGTH	Quantity
36001-88L00-000	CABLE KIT	-	-
2 990C0-88104-000	WIRE COMP, EXTENSION	0.6m	1
3 990C0-88112-000	HARNESS ASSY, NETWORK POWER	-	1
4 990C0-88110-000	CONNECTOR COMP, BRANCH	-	1
5 990C0-88113-000	UNIT COMP, RESISTOR FEMALE	-	1
6 990C0-88114-000	UNIT COMP, RESISTOR MALE	-	1

## DUAL ENGINE with S.P.C or MECHANICAL CONTROL (CAN Connection)

### SINGLE STATION



### DUAL STATION (S.P.C only)

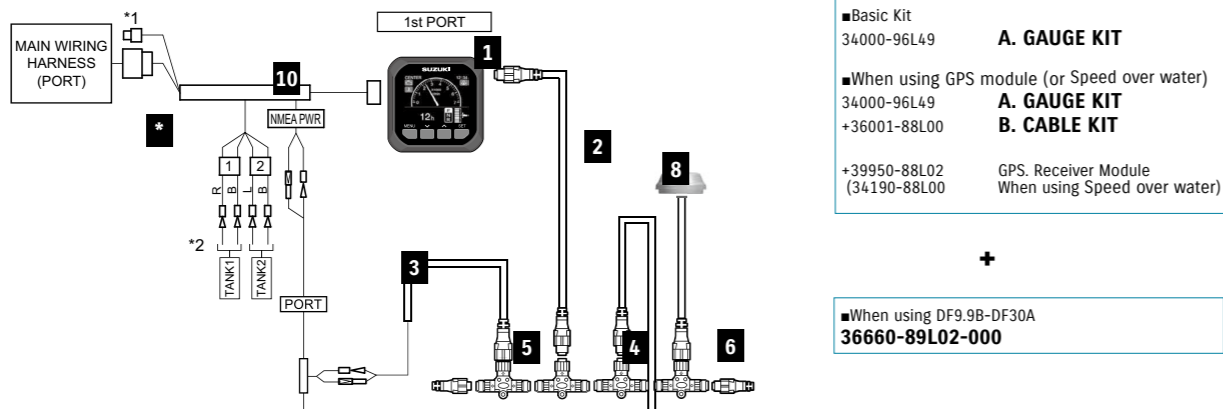


## TOTAL REQUIREMENT LIST

	For DUAL ENGINE			Total Required Quantity					
	PART NUMBER	PART NAME	LENGTH	SINGLE STATION	SINGLE STATION (Speed over water)	SINGLE STATION (Speed over ground)	DUAL STATION	DUAL STATION (Speed over water)	DUAL STATION (Speed over ground)
1	34011-96L42-000	GAUGE ASSY, MULTI	-	2	2	2	4	4	4
-	36001-88L00-000	CABLE KIT	-	-	1	1	-	1	1
7-1	36667-96L40-000	WIRE COMP, GAUGE ADAPTER	-	Select 1			2**		
7-2	36667-96L50-000	WIRE COMP, GAUGE ADAPTER (FOR TANK3-4)	-	Select 1			2**		
8	990C0-88317-000	SENSOR ASSY, PADDLE WHEEL	-	-	1	-	-	1	-
	990C0-88122-000	GPS RECEIVER MODULE	-	-	-	1	-	-	1
9	36667-96L60-000	WIRE COMP, GAUGE EXT	-	-	-	-	Optional		
-	33926-98L00-000	TERMINAL RESISTOR	-	1	1	1	-	-	-
*S.P.C	36623-98L30-000	BCM HARNESS No.1	-	1	1	1	1	1	1
	36624-98L10-000	BCM HARNESS No.2	-	-	-	-	1	1	1
*Mechanical	36620-93JA0-000	MAIN WIRING HARNESS	6.5m/21.3ft	2	2	2	Dual station is not applicable for Mechanical Control.		
	5.0m/16.4ft								
	8.0m/26.2ft								

\* BCM Harness No.1 & 2 ⇒ S.P.C. See page 7.  
Main Wiring Harness ⇒ Mechanical Control (CAN Connection). See page 19.  
\*\*36667-96L40 x 1 + 36667-96L50 x 1 or 36667-96L40 x 2

## SINGLE ENGINE with MECHANICAL CONTROL (Non-CAN Connection)



- Basic Kit  
34000-96L49     **A. GAUGE KIT**
- When using GPS module (or Speed over water)  
34000-96L49     **A. GAUGE KIT**  
+36001-88L00     **B. CABLE KIT**
- +39950-88L02     GPS. Receiver Module  
(34190-88L00     When using Speed over water)

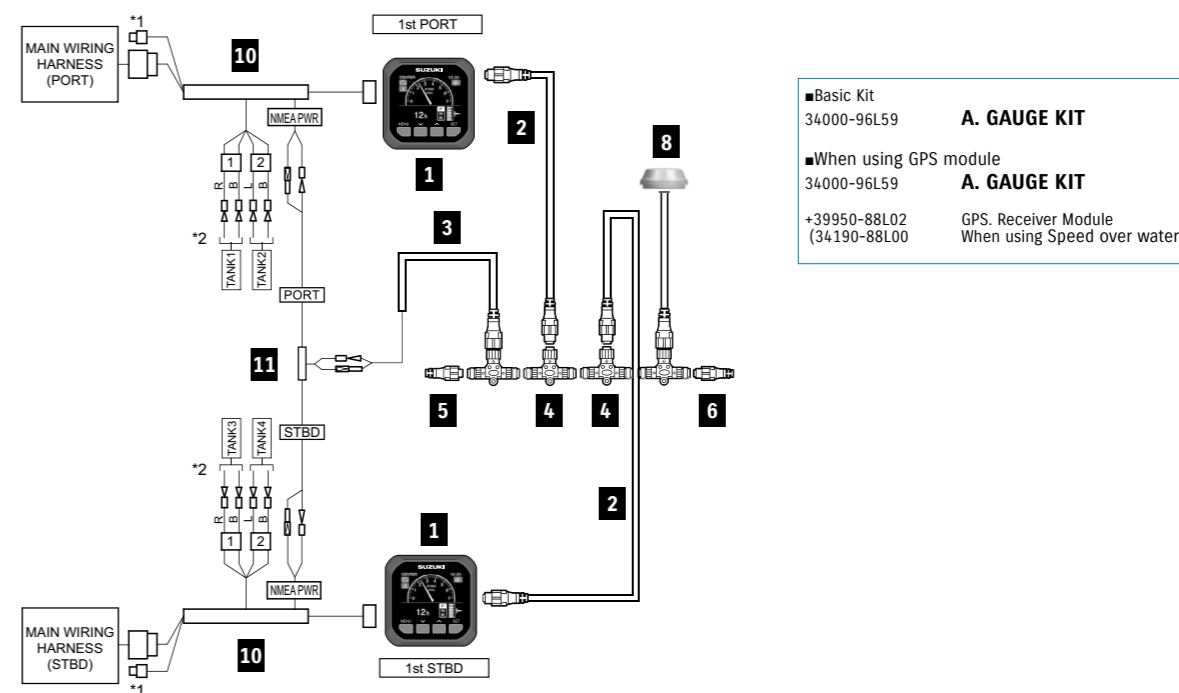
- When using DF9.9B-DF30A  
**36660-89L02-000**

For MECHANICAL CONTROL & SINGLE ENGINE				KIT		Total Required Quantity A (+ B) << >>
PART NUMBER	PART NAME	LENGTH	A. GAUGE KIT 34000-96L49-000	B. CABLE KIT 36001-88L00-000		
1	34011-96L42-000	GAUGE ASSY, MULTI	1	-	1	
2-1	990C0-88104-000	WIRE COMP, EXTENSION	-	1	(1)	
2-2	990C0-88105-000	WIRE COMP, EXTENSION	-	-	-	
3	990C0-88112-000	HARNESS ASSY, NETWORK POWER	-	1	(1)	
4	990C0-88110-000	CONNECTOR COMP, BRANCH	-	1	(1)	
5	990C0-88113-000	UNIT COMP, RESISTOR FEMALE	-	1	(1)	
6	990C0-88114-000	UNIT COMP, RESISTOR MALE	-	1	(1)	
8	990C0-88317-000	SENSOR ASSY, PADDLE WHEEL	-	-	(1)	
	990C0-88122-000	GPS RECEIVER MODULE	-	-	(1)	
10	36661-96L30-000	ADAPTER COMP, GAUGE	1	-	1	
*	36660-89L02-000	SET, ENG TO INTERFACE WIRE	-	-	<1>	

■ \*( )parts are required when using GPS module or Speed sensor.  
■ \* < >part are required when using with DF9.9B to 30A.



## DUAL ENGINE with MECHANICAL CONTROL (Non-CAN Connection)

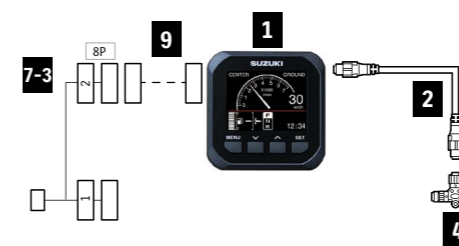


- Basic Kit  
34000-96L59     **A. GAUGE KIT**
- When using GPS module  
34000-96L59     **A. GAUGE KIT**  
+39950-88L02     GPS. Receiver Module  
(34190-88L00     When using Speed over water)

For MECHANICAL CONTROL & DUAL ENGINE				KIT	Total Required Quantity A (+ B)
PART NUMBER	PART NAME	LENGTH	A. GAUGE KIT 34000-96L59-000		
1	34011-96L42-000	GAUGE ASSY, MULTI	2	2	
2-1	990C0-88104-000	WIRE COMP, EXTENSION	2	2	
2-2	990C0-88105-000	WIRE COMP, EXTENSION	-	-	
3	990C0-88112-000	HARNESS ASSY, NETWORK POWER	1	1	
4	990C0-88110-000	CONNECTOR COMP, BRANCH	2	2	
5	990C0-88113-000	UNIT COMP, RESISTOR FEMALE	1	1	
6	990C0-88114-000	UNIT COMP, RESISTOR MALE	1	1	
8	990C0-88317-000	SENSOR ASSY, PADDLE WHEEL	-	(1)	
	990C0-88122-000	GPS RECEIVER MODULE	-	(1)	
10	36661-96L30-000	ADAPTER COMP, GAUGE	2	2	
11	36665-87L10-000	ADAPTER, GAUGE FOR MULTI	1	1	

■ \*( )parts are required when using GPS module or Speed sensor.

## ADDITIONAL GAUGE COMPONENTS (MECHANICAL)



ADDITIONAL GAUGE COMPONENTS (MECHANICAL)				Total Required Quantity
PART NUMBER	PART NAME	LENGTH		
1	34011-96L42-000	GAUGE ASSY, MULTI	1	
2-1	990C0-88104-000	WIRE COMP, EXTENSION	1	
2-2	990C0-88105-000	WIRE COMP, EXTENSION	1	
4	990C0-88110-000	CONNECTOR COMP, BRANCH	1	
7-3	36667-96L11-000	WIRE COMP, DUAL GAUGE ADAPTER	1	
9	36667-96L60-000	WIRE, GAUGE EXT	(1)	

Please use "36667-96L60-000 WIRE, GAUGE EXT" as an extension between "34011-96L42" and "36667-96L11"



# FishHunter™ Drive

## FishHunter™ Drive

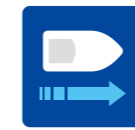
The FishHunter™ Drive is a new feature for Furuno NAVpilot-300 Autopilot, developed exclusively for Suzuki Drive-By-Wire engines. With a simple software update, it offers enhanced autopilot and engine controls which anglers will find highly valuable while jigging or trolling. It is available for configurations of up to 4 engines.



The following items are required to use the FishHunter™ Drive:

Supplier	Product		Note
SUZUKI	Outboard Motor (DBW models from Year 2022)		
	Gateway	34923-96L12	
	Boat Control Module (BCM)	36770-98L01	Included in the DBW kits. See pages 08-15.
Furuno	NAVpilot-300		
	SATELLITE COMPASS™ / GPS + Heading Sensor		
	SMD* / Furuno multi function display		Display is required for Route Smoothing™. *SMD: See page 42.

## FEATURES



### Speed Control

The boat will maintain a preset speed by adjusting engine RPM.



### Route Smoothing™

Automatically controls the speed at waypoints for smooth turns while navigating a designated route. On approach to the final waypoint, the boat will slow down and activate Point Lock™ automatically to hold on the destination.



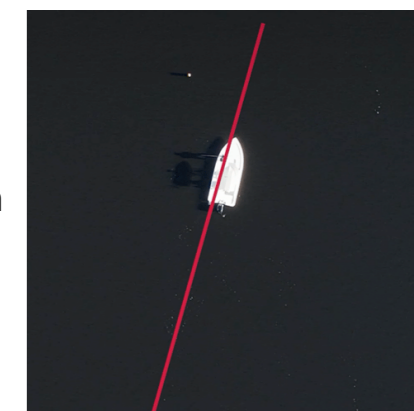
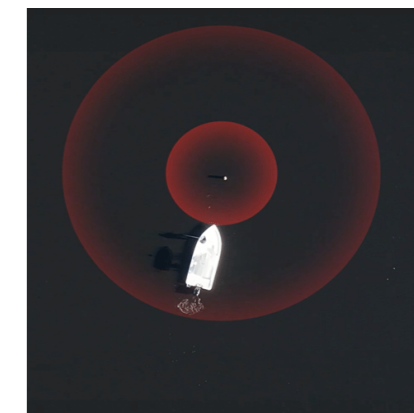
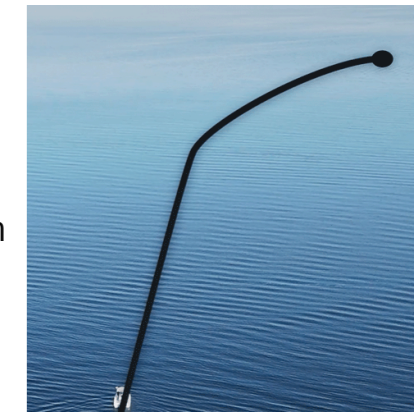
### Point Lock™

Allows the vessel to easily keep a fixed position by controlling the steering and shift, limiting the effects of wind and current.



### SABIKI™ Lock

Expands upon the NAVpilot-300's SABIKI™ function by controlling both the steering and throttle to maintain stern direction, freeing the angler to focus on jigging and other vertical fishing.





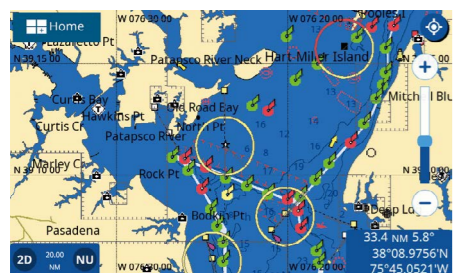
# SUZUKI MULTI-FUNCTION DISPLAY

\*Photo is only for reference purposes. Actual product may vary.

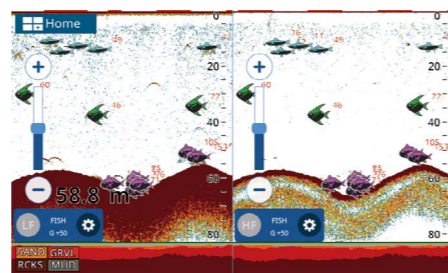
## Design Your Own Screen



## Suzuki Engine Interface



## Detailed Chart With C-MAP 4D Compatibility



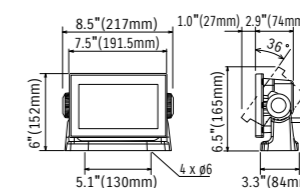
## Advanced Reliable Fishing Partner-FISH FINDER\*

\* Requires FURUNO transducer to utilize this feature. Please contact to local FURUNO Dealers for more details.

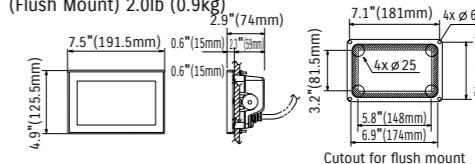
## SMD7 SPECIFICATIONS

MULTI-FUNCTION DISPLAY		SMD7
<b>DISPLAY UNIT</b>		
Type	Color TFT Multi Touch LCD	
Screen Size	7" (177.8mm) Wide	
Screen Resolution	WVGA 800 x 480 pixels	
Screen Brightness	1000 cd/m <sup>2</sup> (typical)	
Language	English (US & UK), Russian, Bulgarian, French, Spanish, German, Italian, Portuguese, Danish, Swedish, Norwegian, Finnish, Greek, Japanese	
Display Modes	Chart Plotter, Fish Finder, Radar*, AIS**, Instruments* <sup>3</sup> (Nav Data, Engine, Wind, Fuel tank, Autopilot*, etc.), GPS status, Weather Forecast *1: Connection to the 1st Watch Wireless Radar DRS4W required *2: Connection to AIS sensor required *3: Connection to external sensors required *4: Connection to the FURUNO NAVPilot-300 required	
Memory Capacity	30,000 points for ship's track and waypoints, 1,000 planned routes (Max. 50 points per route), 5,000 quickpoints	
<b>GPS/WAAS</b>		
Receiver Type	GPS SBAS	72 channels 1 channel (C/A mode, WAAS)
Receiving Frequency	L1 (1575.42 MHz)	
Time to First FIX	100 s (cold start)	
Tracking Velocity	999 kn	
SBAS	WAAS, EGNOS, MSAS	
<b>ACCURACY</b>		
Internal Antenna	GPS WAAS MSAS	10 m Max 5 m Max 7.5 m Max
<b>CHART PLOTTER</b>		
Cartography	C-MAP 4D	
Alarms	Anchor, Depth, Arrival, Speed, Trip, Temperature, etc	
<b>RADAR</b>		
Display Modes	Head-up, North-up* *Heading input required.	
<b>FISH FINDER (Built-in)</b>		
Transmit Frequency	CW: 50/200 kHz, CHIRP: 40 to 225 kHz	
Transducer	300 W or 600 W or 1 kW* (Transducer dependent) *Matching Box MB-1100 required for some specific FURUNO transducers	
Modes	TrueEcho CHIRP™, RezBoost™, ACCU-FISH™, Bottom Discrimination**, Auto gain (Fishing/Cruising), Manual gain, A-Scope, Marker Zoom, Bottom Zoom, Bottom Lock* CHIRP dedicated transducer required. ** Dual frequency compatible transducer required.	
<b>INTERFACE</b>		
NMEA2000	1 Port	
Interface NMEA2000	Input	126992, 127245/250/251/258/489/493/497/505, 128259/267/275, 129025/026/029/038/039/040/041/285/538/540, 129793/794/798/808/809/810, 130306/310/311/312/313/314/316, 130577/830/831/832/880
	Output	126992, 127245/250/251/257/258/505, 128259/267/275, 129025/026/029/033/283/284/285, 130310/312/316/830/831/832
NMEA0183	1 Port	
Interface (NMEA0183)	Output	AAM, APB, BOD, BWR, DBT, DPT, GGA, GLL, GNS, GSA, GSV, GTD, HDG, HDT, MTW, MWV, RMA, RMB, RMC, RTE, THS, TLL, VHW, VTG, WPL, XTE, ZDA, PFEC (SDmrk/SDtbd/SDtfl/pidat)
SD Card Slot	2 Slots, up to 32 GB (SD, SDHC Supported)	
Wireless LAN	IEEE 802.11 b/g/n	
<b>ENVIRONMENT</b>		
Temperature (IEC60945)	-15°C to +55°C	
Waterproofing	IP56	
<b>POWER</b>		
		12-24 VDC
		1.0-0.5 A

### SMD7 Display Unit (Bracket Mount) 2.4lb (1.1kg)



### (Flush Mount) 2.0lb (0.9kg)





# SUZUKI DIAGNOSTIC SYSTEM MOBILE PLUS

The Suzuki Diagnostic System Mobile Plus (SDSM+) is a new app that combines the existing functions of the former SDSM app with new, unique features to support our customer's marine life and experience. With a few screen taps and a simple QR code scan, this app guides customers from boat day planning, all the way to their next maintenance session. The SDSM+ is free of charge and available for anyone with a working smartphone.



## What can SDSM+ Do?

- Provide boating condition forecasts all in one screen.
- Guide customer through pre-departure inspection.
- Receive and display engine condition by scanning a QR code. The app also allows the customer to send this data to their dealer by e-mail.\*  
\*SMG4 (Page 32) or SMD (Page 42) is necessary for this feature.

Find out more at global website here! →

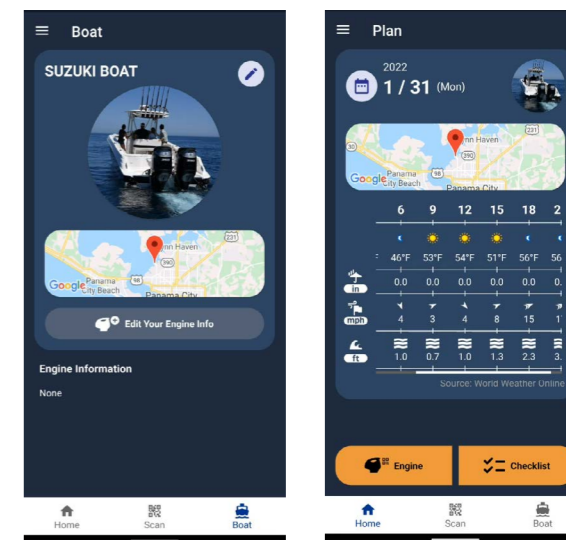
Or go to [https://www.globalsuzuki.com/marine/sdsm\\_plus/](https://www.globalsuzuki.com/marine/sdsm_plus/)



\*QR Code is a registered trademark of DENSO WAVE.

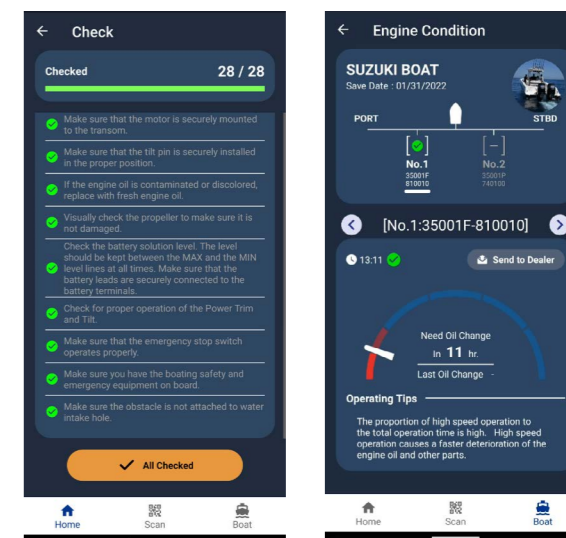
## Before the departure day

Customer will first register their boat and engine(s) information on to the app. Then, customer can select a boating date and destination to check the weather forecast.



## On the departure day

The app will show a pre-departure checklist to inspect the boat and engine(s). Customer can also scan the QR code on the SMG4 or SMD to check engine condition data. The app will also provide operating tips based on piloting tendencies.



## After the boating

Customer can scan the QR code again to check the latest engine condition. After checking, the customer can e-mail the data to an authorized Suzuki dealer. The dealer can use this data to prepare for the customer's next maintenance session.



The SDSM+ app is subject to updates and other changes. Images on this catalogue may differ from the actual screen.



# ANALOGUE INSTRUMENT

## TACHOMETER



**34200-93J14-000** (White)  
**34200-93J02-000** (Black)  
 Gauge Size 4" (101.6mm)  
 Applicable Model DF25A-250  
 Caution system alert with a monitor lamp lighting on when an abnormal engine condition occurs. Refer to SERVICE MANUAL for the detail.



**34200-93J54-000** (White)  
**34200-93J43-000** (Black)  
 Gauge Size 4" (101.6mm)  
 Applicable Model DF40A-200A  
 Exclusive for SUZUKI Troll Mode System. Automatically switches to low RPM scale when the SUZUKI Troll Mode System is activated.



**34200-93J34-000** (White)  
**34200-93J22-000** (Black)  
 Gauge Size 4" (101.6mm)  
 Applicable Model DF8A-30A  
 Full-scale 7000-RPM TACHOMETER can be used on electric-start models by using 4, 6 or 12 pole switch on rear of meter.

## TRIM GAUGE



**34800-93J13-000** (White)  
**34800-93J02-000** (Black)  
 Gauge Size 2" (50.8mm)  
 Applicable Model DF25A-250  
 Magnetic-type gauge shows trim angle for optimum performance and efficiency.

## FUEL GAUGE



**34300-93J14-000** (White)  
**34300-93J03-000** (Black)  
 Gauge Size 2" (50.8mm)  
 FUEL GAUGE alone works with the US Standard 240-30Ω sending unit.

## HOUR METER



**34500-93J13-000** (White)  
**34500-93J02-000** (Black)  
 Gauge Size 2" (50.8mm)  
 Applicable Model DF9.9B-250  
 12-Volt-electric-motor driven meter.

## SPEEDOMETER

\*Each speedometer includes vinyl tube, hard ware, and installation manual.



(White) (Black)  
**34100-93J13-000** **34100-93J02-000**  
 Gauge Size 4" (101.6mm)  
 Maximum Speed 130km/h, 80mph  
 Bourdon-tube type speedometer with readings in km/h and mph.



(White) (Black)  
**34100-93J33-000** **34100-93J22-000**  
 Gauge Size 4" (101.6mm)  
 Maximum Speed 80km/h, 50mph  
 Bourdon-tube type speedometer with readings in km/h and mph.



(White) (Black)  
**34100-93J53-000** **34100-93J42-000**  
 Gauge Size 4" (101.6mm)  
 Maximum Speed 80km/h, 40knots  
 Bourdon-tube type speedometer with readings in km/h and knots.



**34100-93J62-000**  
 Gauge Size 4" (101.6mm)  
 Background White  
 Maximum Speed 120km/h, 65knots  
 Bourdon-tube type speedometer with readings in km/h and knots.

## SPEEDOMETER SENDER ASSY



**34190-95500-000**

## VOLTMETER



**34600-93J13-000** (White)  
**34600-93J02-000** (Black)  
 Gauge Size 2" (50.8mm)  
 Applicable Model DF9.9B-250

## WATER-PRESSURE GAUGE



**34650-93J33-000** (White)  
**34650-93J22-000** (Black)  
 Gauge Size 2" (50.8mm)  
 Applicable Model DF40A-250  
 Select an appropriate INSTALLATION KIT for each model.

## INSTALLATION KIT for WATER-PRESSURE GAUGE



**34660-90J04-000**  
 Applicable Model DF40A-140A  
**34660-96J01-000**  
 Applicable Model DF150A/175A/200A  
**34660-93J02-000**  
 Applicable Model DF200-250





# STEERING

## TILLER HANDLE KIT



**63002-88L2A-YAY**  
Applicable Model  
DF40A/50A

**63002-88L18-YAY**  
Applicable Model  
DF60A/50AV/60AV

**63002-87L20-YAY**  
Applicable Model  
DF70A-90A/100B  
(Year 2022~)

**63002-99L00-YAY**  
Applicable Model  
DF100C/115BT

## Main features



**Tachometer with warning indicators**



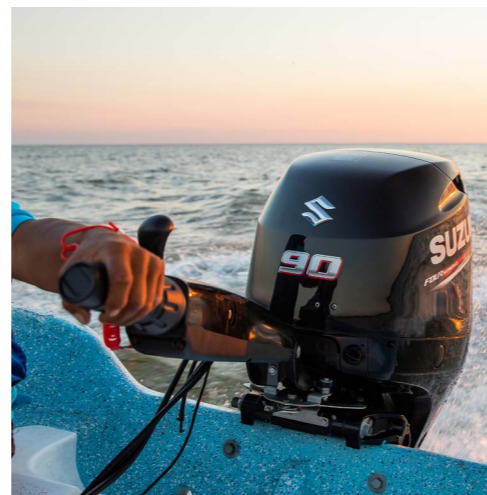
**Three-position angle adjustable bracket**



**Troll mode switch**  
- Activates SUZUKI Troll Mode System and controls RPM from idling engine speed up to 1200rpm at every 50rpm.



**Power trim & tilt switch and throttle grip friction adjuster**



## DUAL-ENGINE TIE-BAR



**67600-90J00-000**  
Stainless steel  
Applicable Model DF100C-140B

**67600-99L00-000**  
Stainless steel  
Applicable Model DF115BG/140BG

**67600-93J00-000**  
Stainless steel  
Applicable Model DF150A-200A/  
200-250  
DF150AP-200AP

## STEERING EXTENSION KIT



**67630-93J00-000**  
for installation of DUAL-ENGINE TIE-BAR  
(67600-93J00-000)  
Applicable Model DF150A-200A/200-250

## DRAG-LINK KIT \*67700- includes Steering Cable Seal



**67700-87L10-000**  
Applicable Model DF70A-90A/100B  
(Year 2022~)

**67700-93J00-000**  
Applicable Model DF40A-60A/  
200-250

**67700-96J00-000**  
Applicable Model DF150A-200A/  
150AP-200AP

**67701-87J11-000**  
Applicable Model DF40A-60A/  
200-250

**67701-87L10-000**  
Applicable Model DF70A-90A/100B  
(Year 2022~)

**67701-90J01-000**  
Applicable Model DF100C-140B

**67701-96J00-000**  
Applicable Model DF150A-200A/  
150AP-200AP

**67701-94L00-000**  
Applicable Model DF25A/30A

**67701-99J02-000**  
Applicable Model DF8A-DF20A

## STEERING-BRACKET ATTACHMENT



**43755-87L00-000**  
Applicable Model DF70A-90A/100B

**43755-88L00-000**  
Applicable Model DF40A-60A

**43755-94L00-000**  
Applicable Model DF25A-30A

**43755-99J01-000**  
Applicable Model DF8A-20A

## STEERING CABLE SEAL

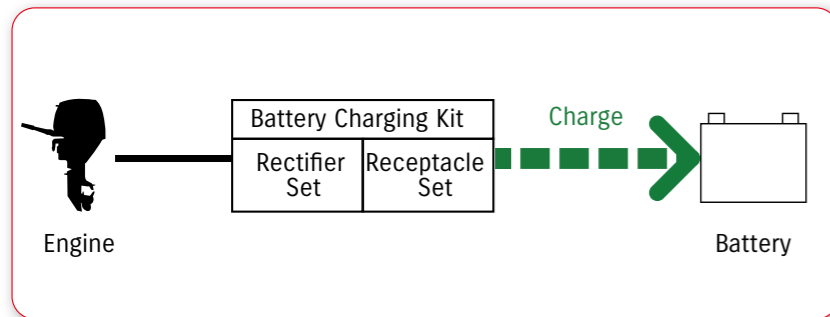


**41161-94400-000**  
Applicable Model DF8A-250

# ELECTRICAL PARTS

## BATTERY CHARGING KIT

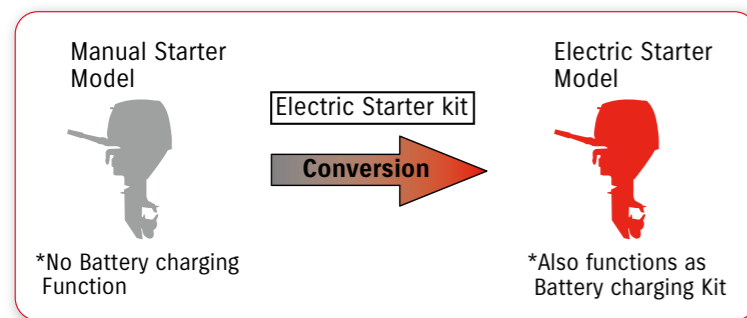
- Optional equipment for charging Battery
- Applicable models : DF4A/5A/6A, DF8A/9.9A, DF9.9B/15A/20A, DF25A/30A.




APPLICABLE MODEL	BATTERY CHARGING KIT RECTIFIER and REGULATOR SET RECEPTACLE KIT
DF4A/5A/6A	32000-97L03-000 32801-97L01-000 39600-97L02-000
DF8A/9.9A	32000-99J03-000 32801-95J03-000 39600-94J03-000
DF9.9B/15A/20A	32000-89L03-000 32801-89L01-000 39600-89L02-000
DF25A/30A	32000-94L02-000 32800-88L01-000 39600-94L00-000 32815-94L00-000 (BRACKET) 01550-06207-000 (BOLT)

## ELECTRIC STARTER KIT

- Optional materials for Converting Manual Starter model into Electric Starter model.
- \* Electric Starter Kit functions as Battery charging Kit as well.



APPLICABLE MODEL	ELECTRIC STARTER KIT
DF4A/5A/6A	—
DF8A/9.9A	31000-99J11-000
DF25A/30A	31000-94L09-000
DF9.9B/15A/20A	31000-89L09-000 (~Year 2017) 31000-89L21-000 (Year 2018~)
	DF9.9B: 33930-89L40-000 DF15A: 33930-89L00-000 DF20A: 33930-89L20-000 DF20A(P40): 33930-89L60-000

\*When fitting to a non-Electric Starter model, please ensure to also replace the ECM with the ones shown here.



## BATTERY ISOLATOR LEAD SET

Optional equipment for charging additional battery.

**33830-98J11-000**

Applicable Model DF150A-200A/  
150AP-300AP/  
325A/350A



# FUEL SYSTEM

## FUEL TANK

NOTE : These tanks do not meet US-EPA requirements.



### 65000-99100-000

12-liter plastic tank without fuel-level gauge

Applicable Model DF4A/5A/6A

### 65000-94L10-000

25-liter plastic tank with A fuel-level gauge

Applicable Model DF8A-140A

### 65000-89L10-000

12-liter plastic tank

Applicable Model DF4A-20A

## REPLACEMENT FUEL CAP

NOTE : Not US-EPA compatible.

### 65520-99100-000

Applicable Model DF5A-20A/R

## FUEL-HOSE SOCKET



### 65750-98506-000

Metal, Inner diameter: 11.2 mm

Applicable Model DF4A-20A/R



### 65750-87J11-000

Plastic, Inner diameter: 6.6 mm

Applicable Model DF4A/8A-30A



### 65750-95501-000

Metal, Inner diameter: 13.0 mm

Applicable Model DF8A/R-140A

## FUEL CONNECTOR



### 65720-986B0-000

Engine side, Plastic

Applicable Model DF4A



### 65740-95D01-000

Tank side, Outer diameter: 13 mm, 1/4"NPT

Applicable Model DF8A/R-140A

## SQUEEZE PUMP



### 65770-90J13-000

Large-in & Large-out

Applicable Model DF8A-20A/40A-140A

### 65770-93J13-000

Large-in & Large-out

Applicable Model DF150-350A

## FUEL-HOSE

### 09352-73124-00D

I/D 7.3 , O/D 12.5

LENGTH 4,000mm

Not US-EPA compatible

## FUEL-HOSE COMPONENT



### 65700-87J19-000

for 25-liter plastic tank to engine

Applicable Model DF8A-20A

### 65700-90J18-000

for 25-liter plastic tank to engine

Applicable Model DF40A-60A

### 65700-90J24-000

for 25-liter plastic tank to engine

Applicable Model DF70A-140A

### 65700-93J14-000

for fuel tank to engine

Applicable Model DF150-350A

## FUEL-HOSE COMPONENT

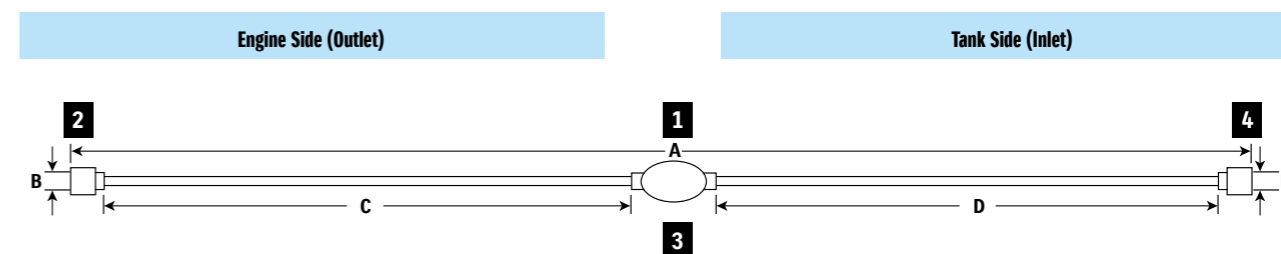
(US-EPA compatible.)

### 65700-87J28-000

Applicable Model DF5A-30A

### 65700-88L06-000

Applicable Model DF40A-60A



## FUEL-HOSE COMPONENT Chart



1		2		-			3		-			4		
FUEL HOSE COMPONENT		SOCKET		HOSE			SQUEEZE PUMP		HOSE			SOCKET		
Part Number	A Length (mm)	Material	B I/D (mm)	Part Number	C Length (mm)	I/D (mm)	O/D (mm)	SQUEEZE PUMP	D Length (mm)	I/D (mm)	O/D (mm)	Material	E I/D (mm)	Part Number
65700-87J19-000	1970	Plastic	6.6	65750-87J11-000	700	7.3	12.5	65770-90J13-000	1100	7.3	12.5	Metal	13.0	65750-95501-000
65700-90J18-000	1250	(no socket)	-	-	(no hose)	-	-	65770-90J13-000	1100	7.3	12.5	Metal	13.0	65750-95501-000
65700-90J24-000	1930	(no socket)	-	-	700	7.3	12.5	65770-90J13-000	1100	7.3	12.5	Metal	13.0	65750-95501-000
65700-93J14-000	3100	(no socket)	-	-	750	9.0	15.0	65770-93J13-000	2250	Large	9.0	15.0	(no socket)	-
65700-87J28-000	2000	Plastic	6.6	65750-87J11-000	700	7.3	12.5	65770-90J03-000	1100	7.3	12.5	Metal	13.0	65750-95501-000
65700-88L06-000	1280	(no socket)	-	-	(no hose)	-	-	65770-90J03-000	1100	7.3	12.5	Metal	13.0	65750-95501-000

## WATER SEPARATOR / FUEL FILTER



### 65900-98J11-000

Applicable Model DF5A-DF140A

### 65900-98J21-000

Applicable Model DF150A-DF350A

## WATER SEPARATOR/FUEL FILTER ELEMENT SET



### 65910-98J01-000

Applicable Model DF5A-DF350A

# SUZUKI PROPELLERS

## STANDARDPROPELLRAR VID MOTORLEVERNAS - SWE

Model	Stigning	Propellrar	Tryckbricka	Mutterkit	Utbyttbar hub
DF2.5	3 x 7-3/8 x 5-3/8"	58110-97JA0-019	57635-91JL0	58130-91JL0 + 09204-03003	
DF4A/5A/6A	3 x 7-1/2 x 6-1/2"	58110-91JM0-019	57635-97L00	58130-91JL0 + 09204-03003	
DF8A/9.9A	3 x 9-1/4 x 9"	58100-89L20-019	57632-94J00	09141-12005 + 09160-12113 +	58110-91JL0-019
09204-02004		Aluminum	3		58110-91JM0-019
DF9.9B/15A	3 x 9-1/4 x 12"	58100-89L50-019	57632-94J00	09141-12005 + 09160-12066 +	58110-91JM0-019
09204-02004					
DF20A	3 x 9-1/4 x 12"	58100-89L50-019	57632-94J00	09141-12005 + 09160-12066 +	58100-89L00-019
09204-02004		Aluminum	3	THICK	58100-90L41-019
DF25A/30A	3 x 10-1/4 x 12"	58100-91L20-019	57632-91L00	57633-96300 + 09141-14008 +	58100-89L20-019
09160-14028 + 09204-03003		Aluminum	3	THICK	58100-90L50-019
DF40A/50A	3 x 11-3/8 14"	58100-88L52-019	57632-95320	57630-94301	
DF60A	3 x 11-1/8 x 16"	58100-88L72-019	57632-95320	57630-94301	
DF70A/80A/90A/100B	3 x 13-1/4 x 19"	58100-87LD0-019	57632-87L01	57630-90J00	
DF100A/115A/140A	3 x 14 x 21"	58100-90JC0-019	57635-92J01	57630-90J00	
DF115BTG/DF140BTG	3 x 14 x 21"	58100-90JC0-019	57635-92J01	57630-90J00	
DF150AP/175AP	3 x 15 x 21"	58700-96J20	57632-93L10	57630-93L00	58105-93J10
DF200AP	3 x 14-1/4 x 23"	58700-96J30	57632-93L10	57630-93L00	58105-93J10
DF225T	3 x 16 x 23"	58700-93L41	57632-93L10	57630-93L00	58105-93J10
DF250AP/300AP	3 x 16 x 23"	58700-93L41	57632-93L10	57630-93L00	58105-93J10
DF300B/325B/350B Främre propeller	3 x 15-1/2 x 24"	58500-98L20	58531-98L00	58540-98L00	58520-98L00
DF300B/325B/350B Bakre propeller	3 x 15-1/2 x 24"	58600-98L21	58631-98L00	58640-98L00	58620-98L00

## WATERGRIP



The WATERGRIP series will be the new standard for Suzuki propellers. The interchangeable square-shaped bush system is designed for quick and easy replacement when required, and also accurately and efficiently converts power from the engine to thrust through the propeller.



## WATERGRIP DUAL



Our flagship models, the DF350A, DF325A and DF300B, introduced the Suzuki Dual Prop System, an industry-leading technology, which delivers outstanding and exciting performance. The two contra-rotating propellers, operating simultaneously, enables greater conversion efficiency as well as better stability, grip, and manoeuvrability.



## WATERGRIP SPORT



The WATERGRIP SPORT propellers feature a high rake blade design for excellent acceleration and exceptional top speed. These propellers are ideal for lightweight sports boats as they give remarkably stable thrust when turning for superior manoeuvrability.



Model	Type	Material	Blade	Diameter		Pitch		Rotation*	Part number
				in	(mm)	in	(mm)		
DF150	Watergrip	Stainless	3	16	(406.4)	15	(381)	RR	58700-93L80-000
DF150AP	Watergrip	Stainless	3	16	(406.4)	17	(431.8)	RR	58700-93L00-000
DF175	Watergrip	Stainless	3	16	(406.4)	18 1/2	(469.9)	RR	58700-93L10-000
DF175AP	Watergrip	Stainless	3	16	(406.4)	20	(508)	RR	58700-93L20-000
DF200	Watergrip	Stainless	3	16	(406.4)	21 1/2	(546.1)	RR	58700-93L30-000
DF200A	Watergrip	Stainless	3	16	(406.4)	23	(584.2)	RR	58700-93L40-000
DF200AP	Watergrip	Stainless	3	16	(406.4)	24 1/2	(622.3)	RR	58700-93L50-000
DF225	Watergrip	Stainless	3	16	(406.4)	26	(660.4)	RR	58700-93L60-000
DF250	Watergrip	Stainless	3	16	(406.4)	27 1/2	(698.5)	RR	58700-93L70-000
DF250AP	Watergrip	Stainless	3	16	(406.4)	17	(431.8)	CR	58800-93L00-000
DF300AP	Watergrip	Stainless	3	16	(406.4)	18 1/2	(469.9)	CR	58800-93L10-000
	Watergrip	Stainless	3	16	(406.4)	20	(508)	CR	58800-93L20-000
	Watergrip	Stainless	3	16	(406.4)	21 1/2	(546.1)	CR	58800-93L30-000
	Watergrip	Stainless	3	16	(406.4)	23	(584.2)	CR	58800-93L40-000
	Watergrip	Stainless	3	16	(406.4)	24 1/2	(622.3)	CR	58800-93L50-000
	Watergrip	Stainless	3	16	(406.4)	26	(660.4)	CR	58800-93L60-000
	Watergrip	Stainless	3	15 1/2	(393.7)	17	(431.8)	RR	58700-96J00-000
	Watergrip	Stainless	3	15 1/4	(387.4)	19	(482.6)	RR	58700-96J10-000
	Watergrip	Stainless	3	15	(381)	21	(533.4)	RR	58700-96J20-000
	Watergrip	Stainless	3	14 3/4	(374.7)	23	(584.2)	RR	58700-96J30-000
	Watergrip	Stainless	3	14 1/2	(368.3)	25	(635)	RR	58700-96J40-000
	Watergrip	Stainless	3	14 1/2	(368.3)	27	(685.8)	RR	58700-96J50-000
	Watergrip	Stainless	3	15 1/2	(393.7)	17	(431.8)	CR	58800-96J00-000
	Watergrip	Stainless	3	15 1/4	(387.4)	19	(482.6)	CR	58800-96J10-000
	Watergrip	Stainless	3	15	(381)	21	(533.4)	CR	58800-96J20-000
	Watergrip	Stainless	3	14 3/4	(374.7)	23	(584.2)	CR	58800-96J30-000
	Watergrip	Stainless	3	14 1/2	(368.3)	25	(635)	CR	58800-96J40-000
	Watergrip	Stainless	3	14 1/2	(368.3)	27	(685.8)	CR	58800-96J50-000
	Watergrip	Stainless	4	15 1/4	(387.4)	18	(457.2)	RR	58700-93J00-000
	Watergrip	Stainless	4	15 1/4	(387.4)	20	(508)	RR	58700-93J10-000
	Watergrip	Stainless	4	15 1/4	(387.4)	22	(558.8)	RR	58700-93J20-000
	Watergrip	Stainless	4	15 1/4	(387.4)	24	(609.6)	RR	58700-93J30-000
	Watergrip	Stainless	4	15 1/4	(387.4)	26	(660.4)	RR	58700-93J40-000
	Watergrip	Stainless	4	15 1/4	(387.4)	20	(508)	CR	58800-93J10-000
	Watergrip	Stainless	4	15 1/4	(387.4)	22	(558.8)	CR	58800-93J20-000
	Watergrip	Stainless	4	15 1/4	(387.4)	24	(609.6)	CR	58800-93J30-000
	Watergrip	Stainless	4	15 1/4	(387.4)	26	(660.4)	CR	58800-93J40-000
	Watergrip Sport	Stainless	3	15	(381)	19	(482.6)	RR	58700-96L00-000
	Watergrip Sport	Stainless	3	14 7/8	(377.8)	21	(533.4)	RR	58700-96L10-000
	Watergrip Sport	Stainless	3	14 1/2	(368.3)	23	(584.2)	RR	58700-96L20-000
	Watergrip Sport	Stainless	3	14 1/4	(362)	25	(635)	RR	58700-96L30-000
	Watergrip Sport	Stainless	3	14	(355.6)	27	(685.8)	RR	58700-96L40-000

\* Be sure to install both front and rear propellers in the same pitch.

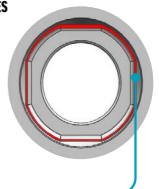
Model	Type	Material	Blade	Diameter		Pitch		Part number
				in	(mm)	in	(mm)	
DF300B	Watergrip Dual	Stainless	3	15 1/2	(393.7)	12	(304.8)	58500-98LA0-000 (Front)
								58600-98LA1-000 (Rear)
DF325A	Watergrip Dual	Stainless	3	15 1/2	(393.7)	15	(381)	58500-98LB0-000 (Front)
								58600-98LB1-000 (Rear)
DF350A	Watergrip Dual	Stainless	3	15 1/2	(393.7)	16 1/2	(419.1)	58500-98LC0-000 (Front)
								58600-98LC1-000 (Rear)
Watergrip Dual	Stainless	3	15 1/2	(393.7)	18	(457.2)	58500-98L90-000 (Front)	
							58600-98L91-000 (Rear)	
Watergrip Dual	Stainless	3	15 1/2	(393.7)	19 1/2	(495.3)	58500-98L60-000 (Front)	
							58600-98L61-000 (Rear)	
Watergrip Dual	Stainless	3	15 1/2	(393.7)	21	(533.4)	58500-98L00-000 (Front)	
							58600-98L01-000 (Rear)	
Watergrip Dual	Stainless	3	15 1/2	(393.7)	22 1/2	(571.5)	58500-98L10-000 (Front)	
							58600-98L11-000 (Rear)	
Watergrip Dual	Stainless	3	15 1/2	(393.7)	24	(609.6)	58500-98L20-000 (Front)	
							58600-98L21-000 (Rear)	
Watergrip Dual	Stainless	3	15 1/2	(393.7)	25 1/2	(647.7)	58500-98L30-000 (Front)	
							58600-98L31-000 (Rear)	
Watergrip Dual	Stainless	3	15 1/2	(393.7)	27	(685.8)	58500-98L40-000 (Front)	
							58600-98L41-000 (Rear)	
Watergrip Dual	Stainless	3	15 1/2	(393.7)	28 1/2	(723.9)	58500-98L50-000 (Front)	
							58600-98L51-000 (Rear)	
Watergrip Dual	Stainless	3	15 1/2	(393.7)	30	(762)	58500-98L70-000 (Front)	
							58600-98L71-000 (Rear)	
Watergrip Dual	Stainless	3	15 1/2	(393.7)	31 1/2	(800.1)	58500-98L80-000 (Front)	
							58600-98L81-000 (Rear)	

## THE NEW WATERGRIP RANGE

WATERGRIP is a stainless-steel propeller series offering accurate response to User operation. Converting engine power into propulsion with high efficiency, this propeller series meets our customer's demand for bigger, faster, more powerful outboards.

The WATERGRIP propeller series employs a new interchangeable and square shaped propeller bush that minimises power loss in delivery.

## PROPELLER BUSH ADVANTAGES



- Better resistance over propeller slip
- Interchangeable bush

# PROPELLER LINE-UP

79230 0 0282

Model	Type	Material	Blade	Diameter		Pitch		Rotation*	Description	Part number
				in	(mm)	in	(mm)			
<b>DF2.5</b>	A520	Aluminum	3	7 3/8	(187.3)	5 3/8	(136.5)	RR		58110-97JA0-019
<b>DF4A</b>	C601	Aluminum	3	7 1/2	(190.5)	6	(152.4)	RR		58110-91JL0-019
<b>DF5A</b>	C611	Aluminum	3	7 1/2	(190.5)	6 1/2	(165.1)	RR		58110-91JM0-019
<b>DF6A</b>	C701	Aluminum	3	7 1/2	(190.5)	7	(177.8)	RR		58110-91JN0-019
<b>DF8A</b>	M701	Aluminum	3	9 1/4	(235)	7	(177.8)	RR		58100-89L00-019
<b>DF9.9A</b>	M821	Aluminum	3	9 1/4	(235)	8	(203.2)	RR	THICK	58100-90L41-019
	M901	Aluminum	3	9 1/4	(235)	9	(228.6)	RR		58100-89L20-019
	M911	Aluminum	3	9 1/4	(235)	9	(228.6)	RR	THICK	58100-90L50-019
	M1001	Aluminum	3	9 1/4	(235)	10	(254)	RR		58100-89L60-019
	M1011	Aluminum	3	9 1/4	(235)	10	(254)	RR	THICK	58100-90L21-019
	M1101	Aluminum	3	9 1/4	(235)	11	(279.4)	RR		58100-89L70-019
<b>DF9.9B</b>		Aluminum	4	10	(254)	5	(127)	RR	High thrust	58100-94JA2-019
<b>DF15A</b>		Aluminum	4	10	(254)	7	(177.8)	RR	High thrust	58100-94JB1-019
<b>DF20A</b>		Aluminum	3	9 1/4	(235)	7	(177.8)	RR		58100-89L00-019
		Aluminum	3	9 1/4	(235)	8	(203.2)	RR	THICK	58100-90L41-019
		Aluminum	3	9 1/4	(235)	9	(228.6)	RR		58100-89L20-019
		Aluminum	3	9 1/4	(235)	9	(228.6)	RR	THICK	58100-90L50-019
		Aluminum	3	9 1/4	(235)	10	(254)	RR		58100-89L60-019
		Aluminum	3	9 1/4	(235)	10	(254)	RR	THICK	58100-90L60-019
		Aluminum	3	9 1/4	(235)	11	(279.4)	RR		58100-89L70-019
		Aluminum	3	9 1/4	(235)	12	(304.8)	RR		58100-89L50-019
<b>DF25A</b>	P911	Aluminum	3	10 1/4	(260.3)	9	(228.6)	RR	THICK	58100-96372-019
<b>DF30A</b>	P1001	Aluminum	3	10 1/4	(260.3)	10	(254)	RR		58100-91L40-019
	P1011	Aluminum	3	10 1/4	(260.3)	10	(254)	RR	THICK	58100-96472-019
	P1101	Aluminum	3	10 1/4	(260.3)	11	(279.4)	RR		58100-91L50-019
	P1201	Aluminum	3	10 1/4	(260.3)	12	(304.8)	RR		58100-91L20-019
	P1211	Aluminum	3	10 1/4	(260.3)	12	(304.8)	RR	THICK	58100-96482-019
	P1301	Aluminum	3	10 1/4	(260.3)	13	(330.2)	RR		58100-91L30-019
	P1311	Aluminum	3	10 1/4	(260.3)	13	(330.2)	RR	THICK	58100-96492-019
	P1401	Aluminum	3	10 1/4	(260.3)	14	(355.6)	RR		58100-95D01-019
	P1501	Aluminum	3	10 1/4	(260.3)	15	(381)	RR		58100-96462-019
<b>DF40A</b>	S900	Aluminum	3	11 1/2	(292.1)	9	(228.6)	RR		58100-88LC0-019
<b>DF50A</b>	S1000	Aluminum	3	11 1/2	(292.1)	10	(254)	RR		58100-88LD0-019
<b>DF60A</b>	S1100	Aluminum	3	11 1/2	(292.1)	11	(279.4)	RR		58100-88LE0-019
	S1200	Aluminum	3	11 5/8	(295.3)	12	(304.8)	RR		58100-88LA0-019
	S1301	Aluminum	3	11 1/2	(292.1)	13	(330.2)	RR		58100-88LB0-019
	S1400	Aluminum	3	11 3/8	(288.9)	14	(355.6)	RR		58100-88L52-019
	S1500	Aluminum	3	11 1/4	(285.8)	15	(381)	RR		58100-88L62-019
	S1600	Aluminum	3	11 1/8	(282.6)	16	(406.4)	RR		58100-88L72-019
	S1700	Aluminum	3	11	(279.4)	17	(431.8)	RR		58100-88LF0-019
	SS1600	Stainless	3	11 1/8	(282.6)	16	(406.4)	RR		58200-88L30-000
<b>DF50AV</b>		Aluminum	3	14	(355.6)	9	(228.6)	RR		58100-87LG1-019
<b>DF60AV</b>		Aluminum	3	14	(355.6)	11	(279.4)	RR		58100-87LH0-019
		Aluminum	3	13 3/4	(349.3)	12	(304.8)	RR		58100-87LJ0-019
		Aluminum	3	14	(355.6)	13	(330.2)	RR		58100-87LA0-019
		Aluminum	3	13 7/8	(352.4)	15	(381)	RR		58100-87LB0-019
		Aluminum	3	13 3/4	(349.3)	17	(431.8)	RR		58100-87LC0-019
<b>DF70A</b>		Aluminum	3	14	(355.6)	13	(330.2)	RR		58100-87LA0-019
<b>DF80A</b>		Aluminum	3	13 7/8	(352.4)	15	(381)	RR		58100-87LB0-019
<b>DF90A</b>		Aluminum	3	13 3/4	(349.3)	17	(431.8)	RR		58100-87LC0-019
<b>DF100B</b>		Aluminum	3	13 3/4	(349.3)	19	(482.6)	RR		58100-87LD0-019
		Aluminum	3	13 3/4	(349.3)	21	(533.4)	RR		58100-87LE0-019
		Aluminum	3	13 3/4	(349.3)	23	(584.2)	RR		58100-87LF0-019
		Aluminum	3	13 1/2	(342.9)	15	(381)	RR		58100-90JE0-019
		Aluminum	3	14	(355.6)	17	(431.8)	RR		58100-90JA0-019
		Aluminum	3	14	(355.6)	19	(482.6)	RR		58100-90JB0-019
		Aluminum	3	14	(355.6)	21	(533.4)	RR		58100-90JC0-019
		Aluminum	3	14	(355.6)	23	(584.2)	RR		58100-90JD0-019
		Stainless	3	13 7/8	(352.4)	15	(381)	RR		58200-92J40-000
		Stainless	3	13 7/8	(352.4)	17	(431.8)	RR		58200-92J50-000
		Stainless	3	13 7/8	(352.4)	19	(482.6)	RR		58200-92J60-000
		Stainless	3	13 7/8	(352.4)	21	(533.4)	RR		58200-92J70-000
		Stainless	3	13 7/8	(352.4)	23	(584.2)	RR		58200-92J80-000
		Stainless	3	13 7/8	(352.4)	25	(635)	RR		58200-92J90-000

\*RR:Regular-Rotation model, CR:Counter-Rotation model

Model	Type	Material	Blade	Diameter		Pitch		Rotation*	Description	Part number
				in	(mm)	in	(mm)			
<b>DF100A</b>		Aluminum	3	13 1/2	(342.9)	15	(381)	RR		58100-90JE0-019
<b>DF115A</b>		Aluminum	3	14	(355.6)	17	(431.8)	RR		58100-90JA0-019
<b>DF115BG</b>		Aluminum	3	14	(355.6)	19	(482.6)	RR		58100-90JB0-019
<b>DF140A</b>		Aluminum	3	14	(355.6)	21	(533.4)	RR		58100-90JC0-019
<b>DF140BG</b>		Aluminum	3	14	(355.6)	23	(584.2)	RR		58100-90JD0-019
		Stainless	3	13 7/8	(352.4)	15	(381)	RR		58200-92J40-000
		Stainless	3	13 7/8	(352.4)	17	(431.8)	RR		58200-92J50-000
		Stainless	3	13 7/8	(352.4)	19	(482.6)	RR		58200-92J60-000
		Stainless	3	13 7/8	(352.4)	21	(533.4)	RR		58200-92J70-000
		Stainless	3	13 7/8	(352.4)	23	(584.2)	RR		58200-92J80-000
		Stainless	3	13 7/8	(352.4)	25	(635)	RR		58200-92J90-000
		Stainless	3	13 7/8	(352.4)	17	(431.8)	CR		58200-92JA0-000
		Stainless	3	13 7/8	(352.4)	19	(482.6)	CR		58200-92JB0-000
		Stainless	3	13 7/8	(352.4)	21	(533.4)	CR		58200-92JC0-000
		Stainless	3	13 7/8	(352.4)	23	(584.2)	CR		58200-92JD0-000

## HARDWARE FOR PROPELLER

Applicable Model	STOPPER	PROPELLER BUSH	HARDWARE KIT					
			SPACER	WASHER	STOPPER	NUT	COTTER PIN	
DF2.5	57635-91JL0-000	58120-97JA0-000	N/A	-	-	-	58130-91JL0-000	09204-03003-000
DF4A/5A/6A	57635-97L00-000	58120-91JL0-000	N/A	-	-	-	58130-91JL0-000	09204-03003-000
DF8A/9.9A	57632-94J00-000	58120-89L00-000	N/A	-	09160-12066-000	-	09141-12005-000	09204-02004-000
DF9.9B/15A/20A	57632-94J00-000	58120-89L00-000	N/A	-	09160-12066-000	-	09141-12005-000	09204-02004-000
DF25A/30A	57632-91L00-000	58120-96401-000	57630-96300-000	57633-96300-000	09160-14028-000	-	09141-14008-000	09204-03003-000
DF40A/50A/60A	57632-95320-000	58120-88L01-000	57630-94301-000	57633-94301-000	09160-18028-000	-	09141-18005-000	09204-03003-000
DF50AV/60AV	57635-90J01-000	58105-90J00-000	57630-90J00-000	57633-90J02-000	09160-18028-000	-	09141-18005-000	09204-03003-000
DF70A/80A/90A/100B	57632-87L01-000	58105-90J00-000	57630-90J00-000	57633-90J02-000	09160-18028-000	-	09141-18005-000	09204-03003-000
DF100A/115A/115BG/140A/140BG	57635-92J01-000	58105-90J00-000	57630-90J00-000	57633-90J02-000	09160-18028-000	-	09141-18005-000	09204-03003-000
DF150A-300AP	57632-93L11-000	58120-93L00-000	57630-93L00-000	57633-93L00-000	09160-18028-000	-	09141-18005-000	09204-03003-000
DF300B/DF325A/350A Front	58531-98L00-000	58520-98L00-000	58540-98L00-000	58541-98L00-000	-	58551-98L00-000	58561-98L00-000	-
DF300B/DF325A/350A Rear	58631-98L00-000	58620-98L00-000	58640-98L00-000	58641-98L00-000	09160-18019-000	-	09141-18005-000	09204-03003-000

## Choosing The Right Propeller

Propeller selection is very important in the performance of the boat. Acceleration, speed, fuel efficiency, stability and engine RPM all are affected by the propeller. Operating requirements and conditions will also determine which design, style and pitch of the propeller your customer can choose. The combination of boat, engine and appropriate propeller size may have already been tested by the boat manufacturer.

**Your Customer may need your assistance to determine the correct propeller for their application.**

## Stainless Steel Propellers

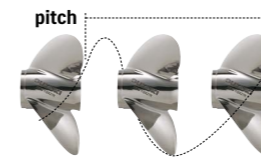
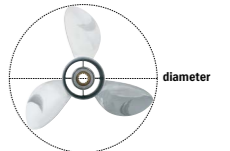
Suzuki Stainless Steel Propellers offer high performance and durability. Their aggressive design enhances the overall performance of the boat and the durability of stainless steel ensures long term dependability. Suzuki Stainless Steel propellers are also fitted with a rubber cushion hub to help absorb vibration and shock should they strike a foreign object.

## Propeller Sizing

When referring to propeller size, the first number is the number of blades, the second number details the **diameter** of the propeller, and the third number is the **pitch**. Example: **3 x 13 x 18** = 3 blades x Diameter: 13 inches x Pitch: 18 inches. The pitch is the most significant factor when choosing a propeller.

## Diameter

Diameter is the distance across an imaginary circle that is made when a propeller rotates. Diameter is determined during the designing process of a propeller and is usually based on engine size, gear case design, horsepower and speed.



## Pitch

Pitch is the theoretical distance that a propeller corkscrews forward through the water. In theory, an 18"(457.2mm) pitch propeller would travel 18"(457.2mm) with each complete revolution\*.

Lower pitches accelerate faster, but have lower top end speed. Higher pitches have a slower acceleration, but attain higher top speeds. An inch of pitch is generally equal to 150-200 engine RPM at wide open throttle (WOT). If pitch increases by an inch, RPM will decrease by 15

## SUZUKI MARINE by MOTUL



### 4-STROKE ENGINE OIL

Suzuki 15W-40 Mineral	
1L	MNM-1M
5L	MNM-5M
208L	MNM-208M

### 4-STROKE ENGINE OIL

Suzuki 5W-40 Full-Synthetic	
1L	SUPER-1M
5L	SUPER-5M
208L	SUPER-208M

### 4-STROKE ENGINE OIL

Suzuki 10W-40 Semi-Synthetic	
1L	99000-99074-M03
5L	99000-99074-M04



### MARINE GEAR OIL

SAE 90 GL-5	
1L	MGO-1M
60L	MGO-60M



### MARINE GEAR OIL

SAE 90 GL-5	
0.35L	MGO-035M

## FLUSH-HOSE ATTACHMENT



**55181-95200-000**  
Applicable Model DF4A-6A/40A-60A



**17917-87L00-000**  
Applicable Model DF8A-350A

## FLUSHING TOOLHMENT



**99000-81202-000**  
FLUSHING TOOL  
Applicable Model DF325A/350A

## TOUCH-UP PAINT

**99000-10202-0EP**  
SHADOW BLACK METALLIC

**99000-10202-YAY**  
PEARL NEBULAR BLACK

**99000-10202-Y5S**  
COOL WHITE

## PAINT SPRAY

**990F0-41004-CLR**  
CLEAR COAT

**990F0-41004-0EP**  
SHADOW BLACK METALLIC

**990F0-41004-YAY**  
PEARL NEBULAR BLACK

**990F0-41004-Y5S**  
COOL WHITE

## ZINC ANODE for saltwater



**55300-95500-000**  
Applicable Model DF8A/9.9A/40A-60A



**55125-96310-000**  
Applicable Model DF25/R/Q



**55321-90J01-000**  
Applicable Model DF50AV/60AV/100A-140A

## ALUMINUM ANODE for brackish water, saltwater



**55321-87J01-000**  
Applicable Model DF2.5-350A



**55320-94900-000**  
Applicable Model DF60A-350A



**55321-95J00-000**  
Applicable Model DF2.5,DF4A-6A

**55321-93J01-000**  
Applicable Model DF70A-90A/100B/150-350A

## MAGNESIUM ANODE for freshwater



**55321-87J11-000**  
Applicable Model DF4A-350A



**55321-94910-000**  
Applicable Model DF70A-350A

## Anode Bulk Pack

**55321-87810-B50**  
Applicable Model DF2.5-300AP  
50pcs in one package

## ENGINE COVER



**99000-81700-000**  
Applicable Model DF8A-20A

**99000-81730-000**  
Applicable Model DF115BG/140BG, DF200T/Z-250T/Z

**99000-81710-000**  
Applicable Model DF25A-60A

**99000-81740-000**  
Applicable Model DF150A-200A/175AP/200AP/250AP/300AP

**99000-81720-000**  
Applicable Model DF70A-140A

**99000-81750-000**  
Applicable Model DF300B/325A/350A

# MAINTENANCE KIT

71000-0000



SUZUKI highly recommends you to replace your outboard motor with Maintenance Kits every 100 hours or 1 year, whichever comes first.



## ALL LINEUP For 4 STROKE OBM

MODEL YEAR	KIT PART NUMBER	PART NUMBER	PART NAME	QTY
DF2/2.5 ('06-'11)	17400-97820	09168-10022-000	GASKET(10X17X1.5)	1
		09202-02006-000	PIN(2.9X14)	1
		09204-02001-000	PIN	1
		09280-33005-000	O RING(D:1.9,ID:32.7)	1
		09482-00406-000	PLUG,SPARK(CR6HSA)	1
		17461-97JM0-000	IMPELLER,WATER PUMP	1
		17471-97J00-000	PANEL,PUMP CASE UNDER	1
		17472-97J00-000	GASKET,PUMP CASE PANEL	1
		55321-87J01-000	ANODE,PROTECTION	1
		59178-97J00-000	GASKET,DRAIN PLUG	2
DF2/2.5 ('12-)	17400-97810	09168-10022-000	GASKET(10X17X1.5)	1
		09202-02006-000	PIN(2.9X14)	1
		09204-03003-000	PIN	1
		09280-33005-000	O RING(D:1.9,ID:32.7)	1
		09482-00406-000	PLUG,SPARK(CR6HSA)	1
		17461-97JM0-000	IMPELLER,WATER PUMP	1
		17471-97J00-000	PANEL,PUMP CASE UNDER	1
		17472-97J00-000	GASKET,PUMP CASE PANEL	1
		55321-87J01-000	ANODE,PROTECTION	1
		59178-97J00-000	GASKET,DRAIN PLUG	2

MODEL YEAR	KIT PART NUMBER	PART NUMBER	PART NAME	QTY		
DF4/5/6 ('02-'10)	17400-91860	17400-98661-000	KIT, WATER PUMP REPAIR	1		
		09168-10022-000	GASKET(10X17X1.5)	3		
		09204-03003-000	PIN	1		
		09482-00299-000	PLUG,SPARK(BPR6ES)	1		
		15410-98500-000	FILTER,FUEL	1		
		17412-91JL0-000	PANEL,WATER PUMP CASE UP	1		
		17413-91JL0-000	SLEEVE,WATER PUMP CASE	1		
55321-87J01-000	ANODE,PROTECTION	2				
DF4/5/6 ('11-'16)	17400-91830	17400-98661-000	KIT, WATER PUMP REPAIR	1		
		09168-10022-000	GASKET(10X17X1.5)	3		
		09204-03003-000	PIN	1		
		09482-00104-000	PLUG,SPARK(CPR6EA-9)	1		
		15410-98500-000	FILTER,FUEL	1		
		17412-91JL0-000	PANEL,WATER PUMP CASE UP	1		
		17413-91JL0-000	SLEEVE,WATER PUMP CASE	1		
55321-87J01-000	ANODE,PROTECTION	2				
DF4A/5A/6A P01 DF4A/6A P03 ('17-)	17400-91891	17400-98661-000	KIT, WATER PUMP REPAIR	1		
		09168-12017-000	GASKET(12X17X1)	1		
		09204-03003-000	PIN	1		
		09280-39002-000	O RING(D:2,ID:38.5)	1		
		09482-00104-000	PLUG,SPARK(CPR6EA-9)	1		
		16510-16H11-000	FILTER,ENGINE OIL	1		
		17412-91JL0-000	PANEL,WATER PUMP CASE UP	1		
		17413-91JL0-000	SLEEVE,WATER PUMP CASE	1		
		44330-13H00-000	FILTER,FUEL	1		
		55321-87J01-000	ANODE,PROTECTION	1		
		55321-95J00-000	ANODE,PROTECTION	1		
		59178-97J00-000	GASKET,DRAIN PLUG	2		
		DF8A/9.9A ('10-)	17400-99840	17400-99J01-000	KIT,WATER PUMP REPAIR	1
09168-12017-000	GASKET(12X17X1)			1		
09204-02004-000	PIN			1		
09280-13004-000	O RING(D:1.9,ID:13)			1		
09280-22019-000	O RING(D:1.9,ID:21.8)			1		
09280-54001-000	O RING(D:2.4,ID:52.6)			1		
09482-00528-000	PLUG,SPARK(CR6E)			2		
15410-98500-000	FILTER,FUEL			1		
16510-45H10-000	FILTER ASSY,ENG OIL			1		
17413-94J00-000	SLEEVE,WATER PUMP CASE			1		
55321-87J01-000	ANODE,PROTECTION			2		
59178-97J00-000	GASKET,DRAIN PLUG			2		
DF9.9/15 ('11-'13)	17400-94810			17400-94J00-000	KIT, WATER PUMP REPAIR	1
		09168-10022-000	GASKET(10X17X1.5)	2		
		09168-12017-000	GASKET(12X17X1)	1		
		09204-02004-000	PIN	1		
		09280-10013-000	O RING(D:2.4,ID:9.6)	1		
		09482-00104-000	PLUG, SPARK(CPR6EA-9)	2		
		15410-98500-000	FILTER,FUEL	1		
		16510-45H10-000	FILTER ASSY,ENG OIL	1		
		17413-94J00-000	SLEEVE,WATER PUMP CASE	1		
		55321-90L00-000	ZINC,PROTECTION	1		
		55321-99E00-000	ANODE,PROTECTION	1		
		DF9.9B/15A/20A ('13-)	17400-89811	17400-99J01-000	KIT, WATER PUMP REPAIR	1
				09168-12017-000	GASKET(12X17X1)	1
09204-02004-000	PIN			1		
09280-13004-000	O RING(D:1.9,ID:13)			1		
09280-22019-000	O RING(D:1.9,ID:21.8)			1		
09280-54001-000	O RING(D:2.4,ID:52.6)			1		
09482-00661-000	PLUG,SPARK(MR6K-9)			2		
15410-87L00-000	FILTER,FUEL			1		
16510-45H10-000	FILTER ASSY,ENG OIL			1		
17413-94J00-000	SLEEVE,WATER PUMP CASE			1		
55321-87J01-000	ANODE,PROTECTION			2		
59178-97J00-000	GASKET,DRAIN PLUG			2		
DF20/25 V2 ('06-)	17400-95872			17400-95J03-000	KIT, WATER PUMP REPAIR	1
		09168-10022-000	GASKET(10X17X1.5)	2		
		09168-12012-000	GASKET(12.5X20X2.5)	1		
		09204-03003-000	PIN	1		
		09280-10013-000	O RING(D:2.4,ID:9.6)	2		
		09280-22019-000	O RING(D:1.9,ID:21.8)	1		
		09482-00427-000	PLUG,SPARK(NGK,BKR6E)	2		
		15410-87J30-000	FILTER,FUEL	1		
		16510-87J01-000	FILTER ASSY,OIL	1		
		17413-95J00-000	SLEEVE,WATER PUMP CASE	1		
		55321-87J01-000	ANODE,PROTECTION	5		
		55321-95J00-000	ANODE,PROTECTION	2		
		DF25/30 ('01-'10)	17400-89822	17400-96354-000	KIT, WATER PUMP REPAIR	1
09168-10022-000	GASKET(10X17X1.5)			2		
09168-12012-000	GASKET(12.5X20X2.5)			1		
09204-03003-000	PIN			1		
09482-00446-000	PLUG,SPARK(NGK DCPR6E)			3		
11265-87E10-000	GASKET,PROTECTION COVER			1		
15410-87J10-000	FILTER,FUEL			1		
16510-87J01-000	FILTER ASSY,OIL			1		
55321-87J01-000	ANODE,PROTECTION			1		

MODEL YEAR	KIT PART NUMBER	PART NUMBER	PART NAME	QTY		
DF25A/30A ('15-)	17400-94824	17400-94L21-000	KIT, WATER PUMP REPAIR	1		
		09168-12017-000	GASKET(12X17X1)	1		
		09204-03003-000	PIN	1		
		09280-22019-000	O RING(D:1.9,ID:21.8)	1		
		09482-00661-000	PLUG,SPARK(MR6K-9)	3		
		15410-87L00-000	FILTER,FUEL	1		
		16510-87J01-000	FILTER ASSY,OIL	1		
		17413-94L00-000	SLEEVE,WATER PUMP CASE	1		
		55321-87J01-000	ANODE,PROTECTION	5		
		59178-97J00-000	GASKET,DRAIN PLUG	2		
		DF40/50 ('06LATE-'10)	17400-87822	17400-96354-000	KIT, WATER PUMP REPAIR	1
				09168-10022-000	GASKET(10X17X1.5)	2
				09168-12012-000	GASKET(12.5X20X2.5)	1
09204-03003-000	PIN			1		
09280-22019-000	O RING(D:1.9,ID:21.8)			2		
09482-00446-000	PLUG,SPARK(NGK DCPR6E)			3		
15410-87J30-000	FILTER,FUEL			1		
16510-87J01-000	FILTER ASSY,OIL			1		
55321-87J01-000	ANODE,PROTECTION			2		
DF40A/50A/60A ('10-)	17400-88812			17400-88L01-000	KIT, WATER PUMP REPAIR	1
				09168-10022-000	GASKET(10X17X1.5)	2
				09168-12012-000	GASKET(12.5X20X2.5)	1
				09204-03003-000	PIN	1
		09280-22019-000	O RING(D:1.9,ID:21.8)	2		
		09482-00446-000	PLUG,SPARK(NGK DCPR6E)	3		
		15410-88L00-000	FILTER,FUEL	1		
		16510-87J01-000	FILTER ASSY,OIL	1		
		55321-87J01-000	ANODE,PROTECTION	3		
		DF50AV/60AV ('14-)	17400-88822	17400-99E12-000	KIT, WATER PUMP REPAIR	1
				09168-10022-000	GASKET(10X17X1.5)	2
				09168-12012-000	GASKET(12.5X20X2.5)	1
				09204-03003-000	PIN	1
09280-22019-000	O RING(D:1.9,ID:21.8)			2		
09482-00446-000	PLUG,SPARK(NGK DCPR6E)			3		
15410-88L00-000	FILTER,FUEL			1		
16510-87J01-000	FILTER ASSY,OIL			1		
55321-87J01-000	ANODE,PROTECTION			3		
DF60 ('09LATE-'09END)	17400-99852			17400-99E12-000	KIT, WATER PUMP REPAIR	1
				09168-10022-000	GASKET(10X17X1.5)	2
				09168-12012-000	GASKET(12.5X20X2.5)	1
				09204-03003-000	PIN	1
		09482-00299-000	PLUG,SPARK(BPR6ES)	4		
		11265-87E10-000	GASKET,PROTECTION COVER	1		
		15410-87J30-000	FILTER,FUEL	1		
		16510-87J01-000	FILTER ASSY,OIL	1		
		55321-87J01-000	ANODE,PROTECTION	1		
		DF60/70 ('07)	17400-99871	17400-87E04-000	KIT, WATER PUMP REPAIR	1
				09168-10022-000	GASKET(10X17X1.5)	2
				09168-12012-000	GASKET(12.5X20X2.5)	1
				09204-03003-000	PIN	1
09482-00299-000	PLUG,SPARK(BPR6ES)			4		
11265-87E10-000	GASKET,PROTECTION COVER			1		
15410-87J30-000	FILTER,FUEL			1		
16510-87J01-000	FILTER ASSY,OIL			1		
55321-87J01-000	ANODE,PROTECTION			1		
DF60/70 ('08-'09 EARLY)	17400-99861			17400-99E01-000	KIT, WATER PUMP REPAIR	1
				09168-10022-000	GASKET(10X17X1.5)	2
				09168-12012-000	GASKET(12.5X20X2.5)	1
				09204-03003-000	PIN	1
		09482-00299-000	PLUG,SPARK(BPR6ES)	4		
		11265-87E10-000	GASKET,PROTECTION COVER	1		
		15410-87J30-000	FILTER,FUEL	1		
		16510-87J01-000	FILTER ASSY,OIL	1		
		17413-99E11-000	SLEEVE,WATER PUMP CASE	1		
		17416-99E00-000	SEALING,WATER PUMP CASE NO.1	1		
		17417-99E00-000	SEALING,WATER PUMP CASE NO.2	1		
		55321-87J01-000	ANODE,PROTECTION	1		
		DF70A/80A/90A ('09-)	17400-87813	17400-87L04-000	KIT, WATER PUMP REPAIR	1
09168-10038-000	GASKET(9.5X16.5X2)			2		
09168-12012-000	GASKET(12.5X20X2.5)			1		
09204-03003-000	PIN			1		
09280-22019-000	O RING(D:1.9,ID:21.8)			3		
09482-00446-000	PLUG,SPARK(NGK DCPR6E)			4		
15410-87L00-000	FILTER,FUEL			1		
16510-61A31-000	FILTER ASSY,OIL WAKO			1		
55321-87J01-000	ANODE,PROTECTION			3		
DF100/115 ('10-'12)	17400-92841			17400-92J23-000	KIT, WATER PUMP REPAIR	1
				09168-10022-000	GASKET(10X17X1.5)	2
				09168-12012-000	GASKET(12.5X20X2.5)	1
				09204-03003-000	PIN	1
		09280-22019-000	O RING(D:1.9,ID:21.8)	2		
		09482-00427-000	PLUG,SPARK(NGK,BKR6E)	4		
		11265-87E10-000	GASKET,PROTECTION COVER	2		
		15410-87J30-000	FILTER,FUEL	1		
		16510-61A31-000	FILTER ASSY,OIL WAKO	1		
		55321-87J01-000	ANODE,PROTECTION	4		

MODEL YEAR	KIT PART NUMBER	PART NUMBER	PART NAME	QTY		
DF100B ('18-)	17400-87832	17400-87L04-000	KIT, WATER PUMP REPAIR	1		
		09168-10038-000	GASKET(9.5X16.5X2)	2		
		09168-12012-000	GASKET(12.5X20X2.5)	1		
		09204-03003-000	PIN	1		
		09280-22019-000	O RING(D:1.9,ID:21.8)	3		
		09482-00446-000	PLUG,SPARK(NGK DCPR6E)	4		
		15412-92J00-000	FILTER,FUEL	1		
		16510-61A31-000	FILTER ASSY,OIL WAKO	1		
		55321-87J01-000	ANODE,PROTECTION	3		
		DF100A/115A/140A ('13-)	17400-92822	17400-92J23-000	KIT, WATER PUMP REPAIR	1
				09168-10022-000	GASKET(10X17X1.5)	2
				09168-12012-000	GASKET(12.5X20X2.5)	1
				09204-03003-000	PIN	1
09280-22019-000	O RING(D:1.9,ID:21.8)			2		
09482-00427-000	PLUG,SPARK(NGK,BKR6E)			4		
11265-87E10-000	GASKET,PROTECTION COVER			2		
15412-92J00-000	FILTER,FUEL			1		
16510-61A31-000	FILTER ASSY,OIL WAKO			1		
55321-87J01-000	ANODE,PROTECTION			4		
DF140 ('10-'12)	17400-92851			17400-92J23-000	KIT, WATER PUMP REPAIR	1
				09168-10022-000	GASKET(10X17X1.5)	2
				09168-12012-000	GASKET(12.5X20X2.5)	1
		09204-03003-000	PIN	1		
		09280-22019-000	O RING(D:1.9,ID:21.8)	2		
		09482-00427-000	PLUG,SPARK(NGK,BKR6E)	4		
		09280-60007-000	O RING(D:3.5,ID:59.6)	1		
		09280-70002-000	O RING(D:3.1,ID:69.4)	1		
		09482-00427-000	PLUG,SPARK(NGK,BKR6E)	4		
		11265-87E10-000	GASKET,PROTECTION COVER	2		
		15410-87J30-000	FILTER,FUEL	1		





## KOMPLETTA VÄXELHUS

Ink. vattenpump, styraift, bultar m.m. **OBS! (exkl propeller)**

Model	Artikel nummer
DF40A/50A/60A Kort rigg (S) - Färgkod YAY	KITLU40-60AS
DF40A/50A/60A Lång rigg (L) - Färgkod YAY	KITLU40-60AL
DF70A/80A/90A/100B Lång rigg (L) - Färgkod YAY	KITLU70-90AL
DF100A/115A/140A Lång rigg (L) - Färgkod YAY	KITLU100-140AL
DF100A/115A/140A X-Lång rigg (X) - Färgkod YAY	KITLU100-140AX
DF150TG/175TG Lång rigg (L) - Färgkod 0EP	KITLU150-175TGL
DF150TG/175TG X-Lång rigg (X) - Färgkod 0EP	KITLU150-175TGX
DF150ZG/175ZG Lång rigg (L) - Färgkod 0EP	KITLU150-175ZGL
DF150ZG/175ZG X-Lång rigg (X) - Färgkod 0EP	KITLU150-175ZGX
DF150AP/175AP/200AP Lång rigg (L) - Färgkod YAY	KITLU150-200APL
DF150AP/175AP/200AP X-Lång rigg (X) - Färgkod YAY	KITLU150-200APX
DF250AP/300AP X-Lång rigg (X) - Färgkod YAY	KITLU250-300APX
DF250AP/300AP XX-Lång rigg (XX) - Färgkod YAY	KITLU250300APXX
DF300BT/325AT/350AT X-Lång rigg (X) - Färgkod YAY	KITLU300-350ATX
DF300BT/325AT/350AT XX-Lång rigg (XX) - Färgkod YAY	KITLU300350ATXX

## NMEA 2000

Kompatibel från DF9.9B -> samt tillverkningsår 2008 ->

Model	Artikel nummer
Komplett kit NMEA2000 Suzuki (inkl. Motor-interface)	KITNMEA2000

## KEYLESS FJÄRRKONTROLL

Model	Artikel nummer
Samtliga Keyless system	37172-96L02



## RIGGLÄNGD

Benämning	Riggjäängd
S - Kort	Ca 400mm 15**
L - Lång	Ca 500mm 20**
X - X-Lång	Ca 600mm 25**
XX - Extra extra lång	Ca 750mm 30**

\*Mättet varierar mellan modellerna, för exakt mått se respektive Set-Up manual.



## LÅSBULT VÄXELHUS

Model	Artikel nummer
Låsbult DF40A-DF60A	990C0-M8
Låsbult DF70A-DF140	990C0-M10
Låsbult DF150-DF300	990C0-M12



## FÖRKLARINGAR:

I = Inpect (Inspektera/rengör/byt ut vid behov)

R = Replace (Byt ut)

\* Byt med intervall 400 timmar eller 2 år

\*\* Byt med intervall 1000 timmar eller 4 år

DF2.5	Antal	Artikel nummer	20 h inkörning	var 100:e h 12 månader	var 200:e h 24 månader
Tändstift	1	CR6HSA		I	R
Motorolja	0,38	MNM-1M / MNM-5M	R	R	I
Oljefilter	0				
Motor oljepluggspackning	1	09168-10022	R	R	
Växehusolja	0,07	MGO-035M	R	R	
Växehus oljepluggspackning	2	59178-97J00	R	R	
Propeller Saxpinne	1	09204-02001	I	I	R
Bränslefilter*	0				
Impeller	1	17461-97J00			R
Ventilspel		0,13-0,17	I		I
Ventilkåpspackning	1	11189-97JL0	R		R
Anoder och vajrar				I	I

DF4A/5A/6A	Antal	Artikel nummer	20 h inkörning	var 100:e h 12 månader	var 200:e h 24 månader
Tändstift	1	CPR6EA-9		I	R
Motorolja	0,7	MNM-1M / MNM-5M	R	R	I
Oljefilter	1	16510-35G00	R	R	I
Motor oljepluggspackning	1	09168-12017	R	R	
Växehusolja	0,19	MGO-035M	R	R	
Växehus oljepluggspackning	2	59178-97J00	R	R	
Propeller Saxpinne	1	09204-03003	I	I	R
Bränslefilter*	1	44330-13H00	I	I	R
Impeller	1	17461-985M0			R
Ventilspel		0,13-0,17	I		I
Ventilkåpspackning	1	11189-97L00	R		R
Anoder och vajrar				I	I

DF8A/9.9A	Antal	Artikel nummer	20 h inkörning	var 100:e h 12 månader	var 200:e h 24 månader
Tändstift	2	CR6E		I	R
Motorolja	0,9	MNM-1M / MNM-5M	R	R	I
Oljefilter	1	16510-45H10	R	R	I
Motor oljepluggspackning	1	09168-12017	R	R	
Växehusolja	0,25	MGO-035M	R	R	
Växehus oljepluggspackning	2	59178-97J00	R	R	
Propeller Saxpinne	1	09204-02004	I	I	R
Bränslefilter*	1	15410-98500	I	I	I
Impeller	1	17461-939M0			R
Ventilspel		0,16 - 0,20	I		I
Ventilkåpspackning	1	11178-99J00	R		R
Anoder och vajrar				I	I

DF9.9B/15A/20A	Antal	Artikel nummer	20 h inkörning	var 100:e h 12 månader	var 200:e h 24 månader
Tändstift	2	MR6K-9		I	R
Motorolja	1,1	MNM-1M / MNM-5M	R	R	I
Oljefilter	1	16510-45H10	R	R	R
Motor oljepluggspackning	1	09168-12017	R	R	
Växehusolja	0,25	MGO-035M	R	R	
Växehus oljepluggspackning	2	59178-97J00	R	R	
Propeller Saxpinne	1	09204-02004	I	I	R
Bränslefilter*					
Impeller	1	17461-939M0			R
Ventilspel		0,18 - 0,22	I		I
Ventilkåpspackning	1	11162-89L01	R		R
Anoder och vajrar				I	I

DF25A/30A	Antal	Artikel nummer	20 h inkörning	var 100:e h 12 månader	var 200:e h 24 månader
Tändstift	3	MR6K-9		I	R
Motorolja	1,7	MNM-1M / MNM-5M	R	R	I
Oljefilter	1	16510-87J01	R	R	R
Motor oljepluggspackning	1	09168-12017	R	R	
Växehusolja	0,33	MGO-035M	R	R	
Växehus oljepluggspackning	2	59178-97J00	R	R	
Propeller Saxpinne	1	09204-03003	I	I	R
Bränslefilter*	1	15410-87L00	I	I	I
Impeller	1	17461-94L00			R
Ventilspel		In: 0,18-0,22 Ut: 0,20-0,24	I		I
Ventilkåpspackning	1	11162-94L00	R		R
Anoder och vajrar				I	I

DF40A/50A/60A	Antal	Artikel nummer	20 h inkörning	var 100:e h 12 månader	var 200:e h 24 månader
Tändstift	3	DCPR 6E		I	R
Motorolja	2,9	MNM-5M	R	R	R
Oljefilter	1	16510-87J01	R	R	R
Motor oljepluggspackning	1	09168-12012	R	R	
Växehusolja	0,61	MGO-1M	R	R	
Växehus oljepluggspackning	2	09168-10022	R	R	
Propeller Saxpinne	1	09204-03003	I	I	R
Bränslefilter Low*	1	15410-88L00	I	I	I
Bränslefilter High**	1	15642-88L00			
Impeller	1	17461-96312			R
Ventilspel		In: 0,18-0,22 Ut: 0,28-0,32	I		I
Ventilkåpspackning	1	11189-88L00	R		R
Anoder och vajrar				I	I

DF70A/80A/90A/100B	Antal	Artikel nummer	20 h inkörning	var 100:e h 12 månader	var 200:e h 24 månader
Tändstift	4	DCPR 6E		I	R
Motorolja	4,3	MNM-5M	R	R	R
Oljefilter	1	16510-61A31	R	R	R
Motor oljepluggspackning	1	09168-12012	R	R	
Växehusolja	0,85	MGO-1M	R	R	
Växehus oljepluggspackning	2	09168-10022	R	R	
Propeller Saxpinne	1	09204-03003	I	I	R
Bränslefilter Low*	1	15412-92J00	I	R	I
Bränslefilter High**	1	15642-88L00			
Impeller	1	17461-87E12			R
Ventilspel		In: 0,23-0,27 Ut: 0,30-0,34	I		I
Ventilkåpspackning	1	11189-87L00	R		R
Anoder och vajrar				I	I

DF100A/115A/140A	Antal	Artikel nummer	20 h inkörning	var 100:e h 12 månader	var 200:e h 24 månader
Tändstift	4	BKR 6E		I	R
Motorolja	5,7	MNM-5M	R	R	R
Oljefilter	1	16510-61A31	R	R	R
Motor oljepluggspackning	1	09168-12012	R	R	
Växehusolja	1,05	MGO-1M	R	R	
Växehus oljepluggspackning	2	09168-10022	R	R	
Propeller Saxpinne	1	09204-03003	I	I	R
Bränslefilter Low*	1	15412-92J00	I	R	I
Bränslefilter High**	1	15642-88L00			
Impeller	1	17461-90J01			R
Ventilspel		In: 0,23-0,27 Ut: 0,23-0,27	I		I
Ventilkåpspackning	1	11189-90J00	R		R
Anoder och vajrar				I	I

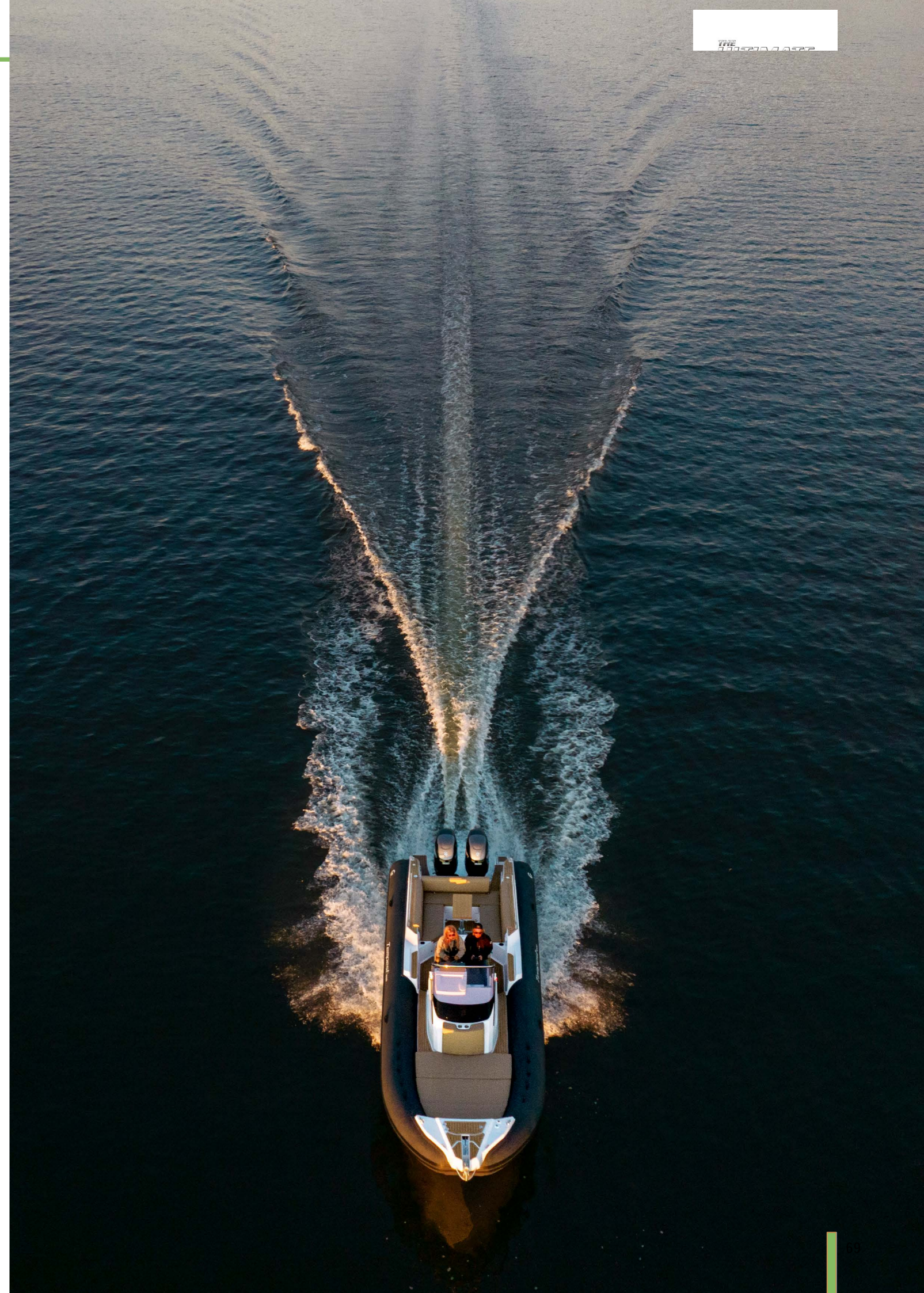
# SERVICESCHEMA

DF115BG/140BG & DF115B/DF140B	Antal	Artikel nummer	20 h inkörning	var 100:e h 12 månader	var 200:e h 24 månader
Tändstift	4	LKR 6E		I	R
Motorolja	5,7	MNM-5M	R	R	R
Oljefilter	1	16510-61A31	R	R	R
Motor oljepluggspackning	1	09168-12012	R	R	
Växehusolja	1,05	MGO-1M	R	R	
Växehus oljepluggspackning	2	09168-10022	R	R	
Propeller Saxpinne	1	09204-03003	I	I	R
Bränslefilter Low*	1	15412-92J00	I	R	I
Bränslefilter High**	1	15642-88L00			
Impeller	1	17461-90J01			R
Ventilspel		In: 0,23-0,27 Ut: 0,33-0,37	I		I
Ventilkåpspackning	1	11189-90J00	R		R
Anoder och vajrar				I	I

DF150AP/175AP/200AP	Antal	Artikel nummer	20 h inkörning	var 100:e h 12 månader	var 200:e h 24 månader
Tändstift	4	LKR 6E		I	R
Motorolja	8,5	MNM-5M	R	R	R
Oljefilter	1	16510-96J10	R	R	R
Motor oljepluggspackning	1	09168-12012	R	R	
Växehusolja	1,1	MGO-1M	R	R	
Växehus oljepluggspackning	2	09168-10034	R	R	
Propeller Saxpinne	1	09204-03003	I	I	R
Bränslefilter Low*	1	15412-92J00	I	R	I
Bränslefilter High**	1	15440-96J01			
Impeller	1	17461-90J01			R
Ventilspel		In: 0,23-0,27 Ut: 0,30-0,34	I		I
Ventilkåpspackning	1	11189-96J00	R		R
Anoder och vajrar				I	I

DF250AP/300AP	Antal	Artikel nummer	20 h inkörning	var 100:e h 12 månader	var 200:e h 24 månader
Tändstift	6	BKR 6E		I	R
Motorolja	8,2	MNM-5M	R	R	R
Oljefilter	1	16510-96J10	R	R	R
Motor oljepluggspackning	1	09168-12012	R	R	
Växehusolja	1,1	MGO-1M	R	R	
Växehus oljepluggspackning	2	09168-10034	R	R	
Propeller Saxpinne	1	09204-03003	I	I	R
Bränslefilter Low*	1	15412-93J10	I	R	I
Bränslefilter High**	1	15440-93J00			
Impeller	1	17461-90J01			R
Ventilspel		In: 0,23-0,27 Ut: 0,33-0,37	I		I
Ventilkåpspackning	2	BB: 11189-93J00 SB: 11179-93J00	R		R
Anoder och vajrar				I	I

DF300BT/325AT/350AT	Antal	Artikel nummer	20 h inkörning	var 100:e h 12 månader	var 200:e h 24 månader
Tändstift	6	ILZKR 7D8		I	R
Motorolja	8,5	MNM-5M	R	R	R
Oljefilter	1	16510-96J10	R	R	R
Motor oljepluggspackning	1	09168-12012	R	R	
Växehusolja	3,2	MGO-1M	R	R	
Växehus oljepluggspackning	2	09168-10034	R	R	
Propeller Saxpinne	1	09204-03003	I	I	R
Bränslefilter Low*	1	15412-93J10	I	R	I
Bränslefilter High**	1	15643-98L00			
Impeller	1	17461-93J00			R
Ventilspel		In: 0,23-0,27 Ut: 0,33-0,37	I		I
Ventilkåpspackning	2	BB: 11189-93J00 SB: 11179-93J00	R		R
Anoder och vajrar				I	I



# THE ULTIMATE OUTBOARD MOTOR



Please read your Owner's Manual carefully. Remember, boating and alcohol or other drugs don't mix. Always wear a personal flotation device when boating. Please operate your outboard safely and responsibly.

Suzuki encourages all users to operate their boats safely, responsibly, and with respect for the marine environment.

Specifications, appearances, equipment, colours, material and other items of "SUZUKI" products shown in this catalogue are subject to change by the manufacturers at any time without prior notice and may vary depending on local conditions or requirements. Some models and items are not available in some territories. Each model or item might be discontinued without notice. Please contact SMC for details of such changes. Actual body or item colour might differ from the colours in this catalogue.



Artikelnummer: R07SZUTBTBH23  
[www.suzukimarin.se](http://www.suzukimarin.se)